

# N32G432x8/xB

# Product Brief

N32G432 series uses 32-bit ARM Cortex-M4F core, operating frequency up to 108MHz, supporting floating-point unit and DSP instructions. The devices integrate up to 128KB of encrypt Flash, and 32KB of SRAM. The series features rich of high-performance interfaces, including one built-in 12-bit 5Msps ADC, two independent rail-to-rail operational amplifiers, two high-speed comparators, one 1Msps 12-bit DAC, multi-channel U(S)ART, I2C, SPI, USB, CAN, and other communication interfaces, allowing a built-in hardware acceleration engine for cryptographic algorithms.

## Key Features

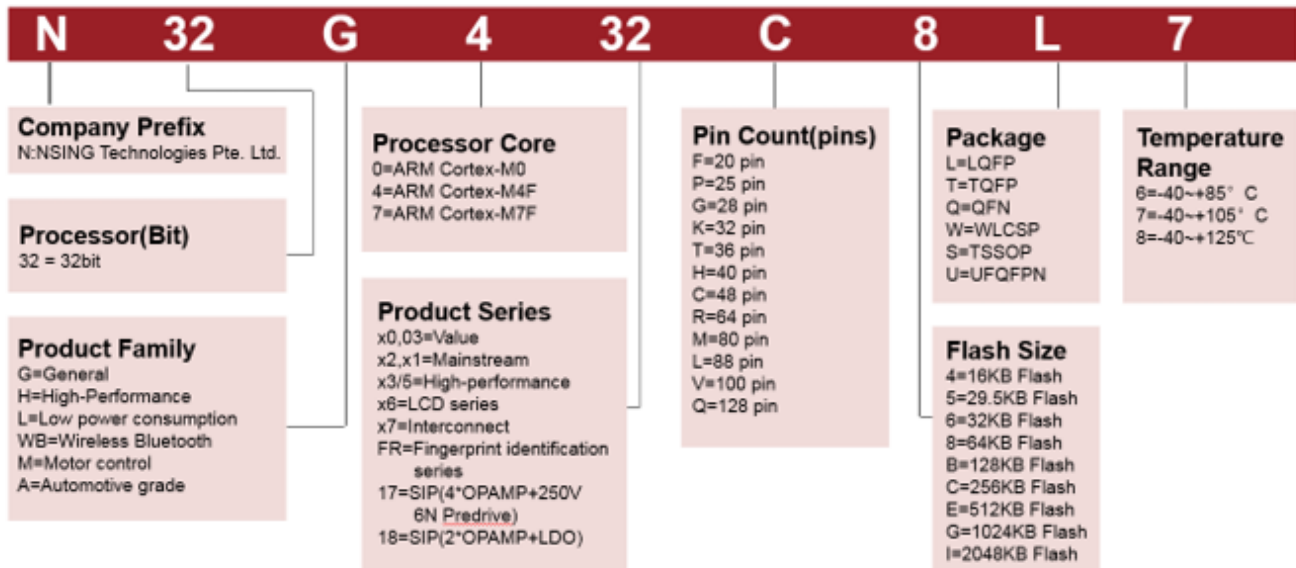
- **CPU Core**
  - 32-bit ARM Cortex-M4F core with FPU, supporting single-cycle multiplication and hardware division, DSP instructions and MPU
  - Built-in 2KB instruction Cache, supporting 0-wait-state execution from Flash memory
  - Frequency up to 108MHz with 135DMIPS
- **Memories**
  - Up to 128KByte of embedded Flash with ECC
  - Support encryption, multi-user partition and data protection
  - 100,000 erase/write cycles, and 10 years data retention
  - Up to 32KByte of SRAM with hardware parity check, including 24Kbyte SRAM1(SRAM1 can be configured to data retention in STOP2 mode) and 8 Kbyte SRAM2(both in Standby and Stop2 modes, SRAM2 can be configured to data retention)
- **Low Power Management**
  - STANDBY mode: 2.5uA, all backup registers retained, all IOs retained, optional RTC Run, 8KByte SRAM2 retained, supports fast wake up.
  - STOP2 mode: 6uA, RTC Run, 8KByte SRAM2 and 24Kbyte SRAM1 can be configured to retention, CPU registers retained, IOs retained, supports fast wake up
  - RUN mode: 90uA/MHz@108MHz
  - LPRUN mode: PLL off, MSI as the system master clock, MR off, LPR on, USB/CAN/SAC power off, other peripherals are optional
- **High Performance Analog Interfaces**
  - 1x 12bit 5Msps ADC with 12/10/8/6 bits configurable resolution, up to 16 external single-ended input channels, supporting differential mode.
  - 1x 12bit 1Msps DAC
  - Internal 2.048V independent reference voltage source
- **Clock**

- 4MHz~32MHz high-speed external crystal oscillator
- 32.768KHz low-speed external crystal oscillator
- High-speed internal RC(HSI) 16MHz
- Multi-speed internal RC(MSI) 100K~4MHz
- Low-speed internal RC(LSI) 40KHz
- Built-in high-speed PLL
- Supports one clock output, which can be configured as low-speed or high-speed clock
- **Reset**
  - Support power on, brown-out, and external pin reset.
  - Support watchdog reset, software reset
- **GPIOs**
  - Up to 52 GPIOs
  - Support multiplexed functions
  - Maximum toggle speed of 50 MHz
- **Communication Interfaces**
  - 5x U(S)ART interfaces, including three USART interfaces (support 1xISO7816, 1xIrDA, LIN) and two UART interfaces
  - 1x LPUART, supports waking up MCU from low-power STOP2 mode
  - 2x SPI interfaces, the rate is up to 27 Mbps, support I2S communication
  - 2x I2C interfaces, the rate is up to 1 MHz, which can be configured in master/slave mode and support dual address response in slave mode
  - 1x USB2.0 FS Device interface
  - 1x CAN 2.0A/B bus interface
- **DMA Controller**
  - 1x high-speed DMA controller
  - Each controller supports 8 channels
  - Channel source address and destination address can be configured arbitrarily
- **RTC Real-Time Clock**
  - Supports leap year perpetual calendar, alarm event, periodic wake up, support internal and external clock calibration
- **Timers**
  - 2x 16bit advanced control timers
    - Support input capture, complementary output, quadrature encoding input, the highest control accuracy is 9.25ns.
    - Each timer has four independent channels, with 3 channels supporting complementary PWM outputs.
  - 5x 16bit general-purpose timers
    - Support input capture/output comparison /PWM output.
    - Each timer has 4 independent channels.
  - 2x 16bit basic timers
  - 1x 16bit low power timer, supports double pulse counting function, can work in STOP2 mode
  - 1x 24bit SysTick timer
  - 1x 7bit window Watchdog (WWDG)

- 1x 12bit independent Watchdog (IWDG)
- **Programming Methods**
  - Support SWD/JTAG online debugging interface
  - Support UART and USB Bootloader
- **Security Features**
  - Built-in hardware acceleration engine for cryptographic algorithms
  - Support AES, DES, TDES, SHA1/224/256, SM1, SM3, SM4, and SM7 algorithms
  - Flash storage encryption, multi-user partition management (MMU)
  - True random number generator(TRNG)
  - CRC16/32 calculation
  - Support write protection (WRP), multiple read protection (RDP) levels (L0/L1/L2)
  - Support secure boot, program encryption download, secure update
  - Support external clock failure detection, tamper detection
- **96-bit UID and 128-bit UCID**
- **Operating Conditions**
  - Operating voltage range: 1.8V~3.6V
  - Operating temperature range: -40°C ~ 105°C
  - ESD: ±4KV (HBM model), ±1KV (CDM model)
- **Packages**
  - LQFP32(7mm x 7mm)
  - LQFP48(7mm x 7mm)
  - LQFP64(10mm x 10mm)
- **Ordering Information**

Reference	Part Number
N32G432x8	N32G432K8L7, N32G432C8L7, N32G432R8L7
N32G432xB	N32G432KBL7, N32G432CBL7, N32G432RBL7

# 1 Naming Convention



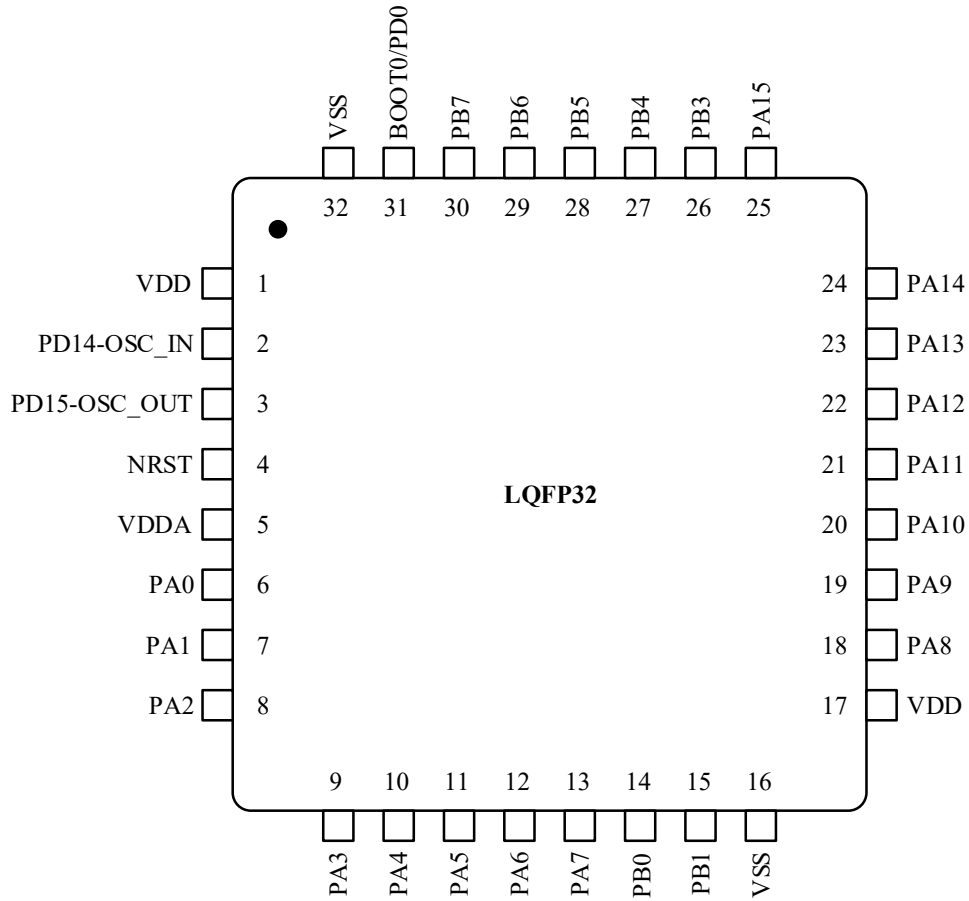
## 2 Product Configurations

Device		N32G432K8/B		N32G432C8/B		N32G432R8/B	
Flash Capacity (KB)		64	128	64	128	64	128
SRAM Capacity (KB)		24	32	24	32	24	32
CPU Frequency		ARM Cortex-M4F @108MHz,135DMIPS					
Operating Conditions		1.8~3.6V/-40~105°C					
Timers	General	5					
	Advanced	2					
	Basic	2					
	LPTIM	1					
Communication Interface	SPI	2					
	I2S	2					
	I2C	2					
	UART	2					
	USART	2	3				
	LPUART	1					
	USB	1					
	CAN	1					
GPIO		26	38		52		
DMA		1x					
Number of Channels		8 Channel					
12bit ADC		1x	1x		1x		
Number of Channels		10 Channel	10 Channel		16 Channel		
12bit DAC		1x					
Number of Channels		2 Channel					
Algorithm Support		DES/TDES、AES、SHA1/SHA224/SHA256 SM1、SM3、SM4、SM7、CRC16/CRC32、TRNG					
Security Protection		Read-Write Protection (RDP/WRP), Storage Encryption, Partition Protection, Security Boot					
Package		LQFP32	LQFP48		LQFP64		

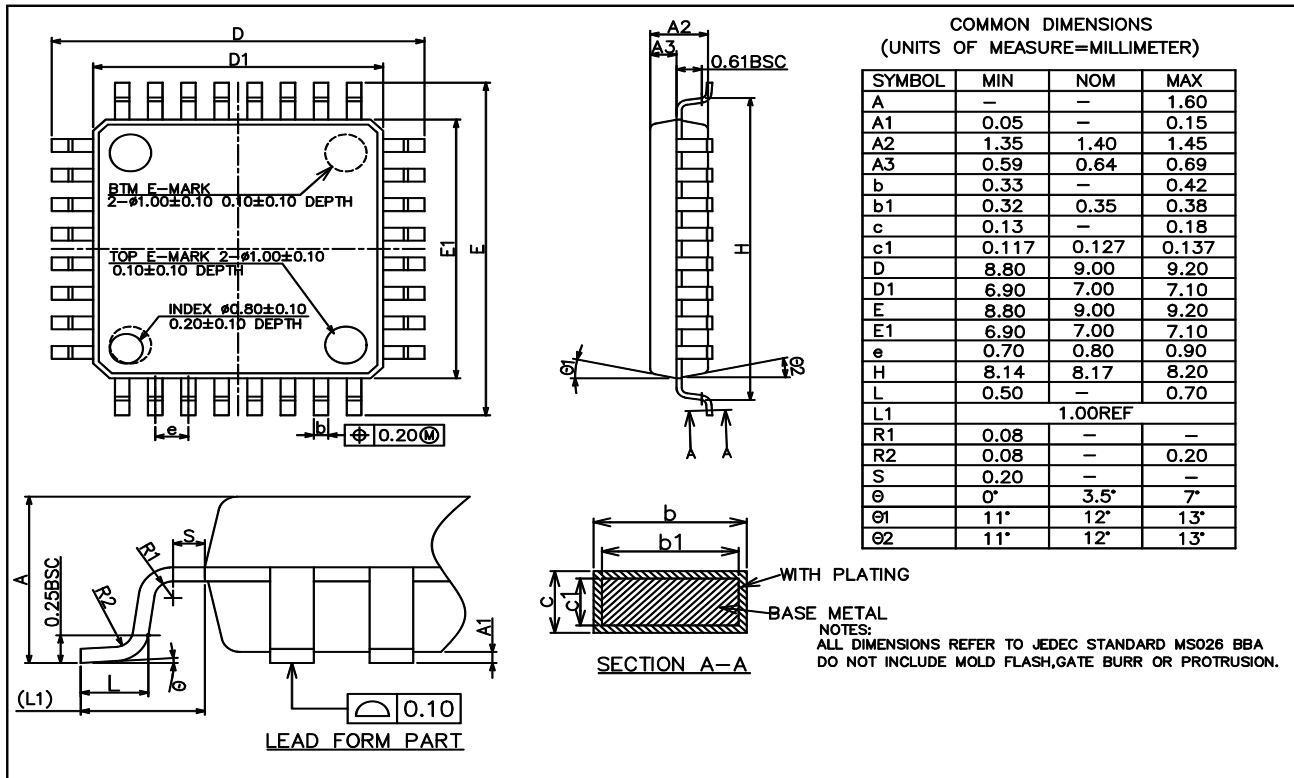
### 3 Packages

#### 3.1 LQFP32 Package

##### 3.1.1 LQFP32 Pin Assignment

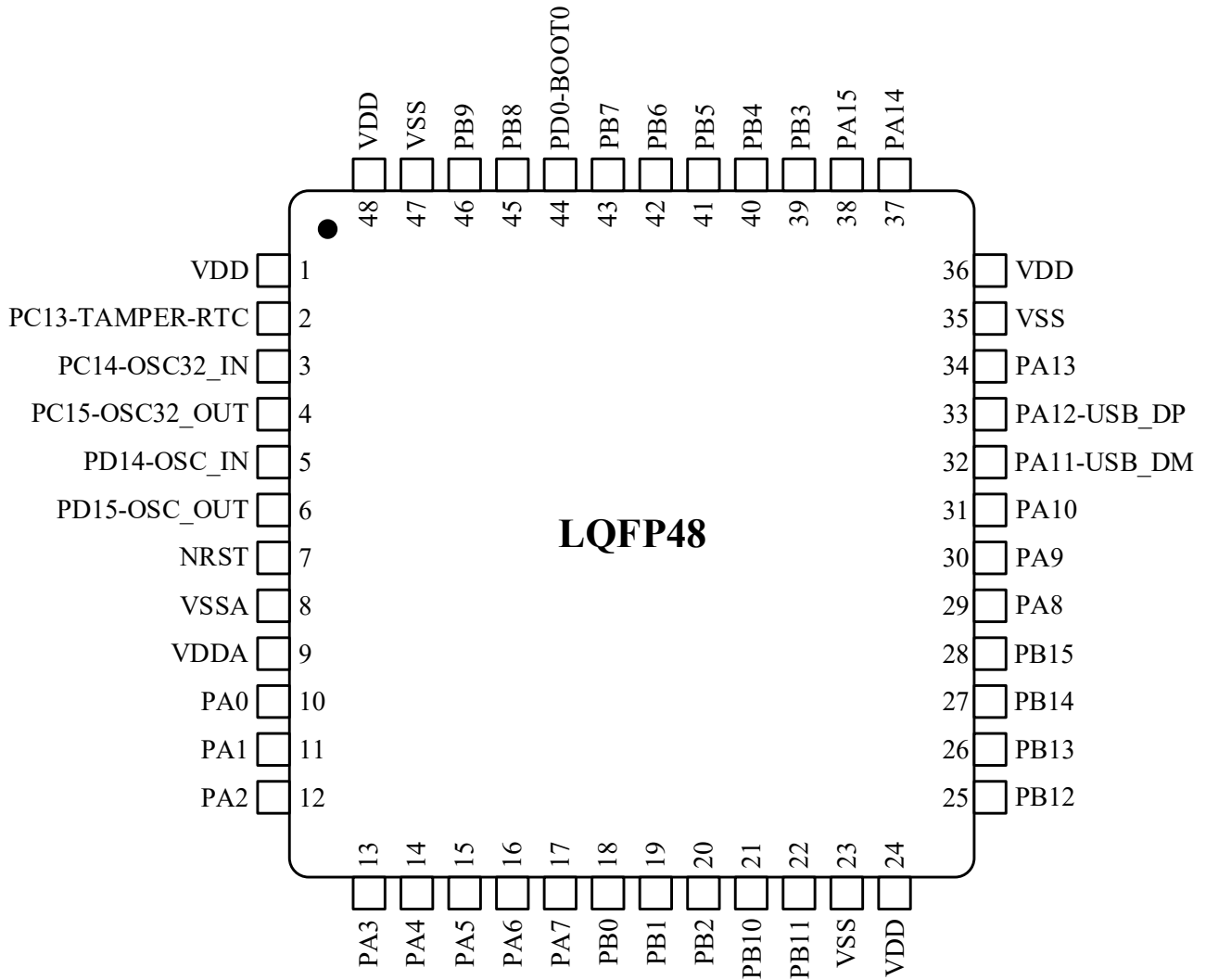


3.1.2 LQFP32(7mm x 7mm) Package Dimensions



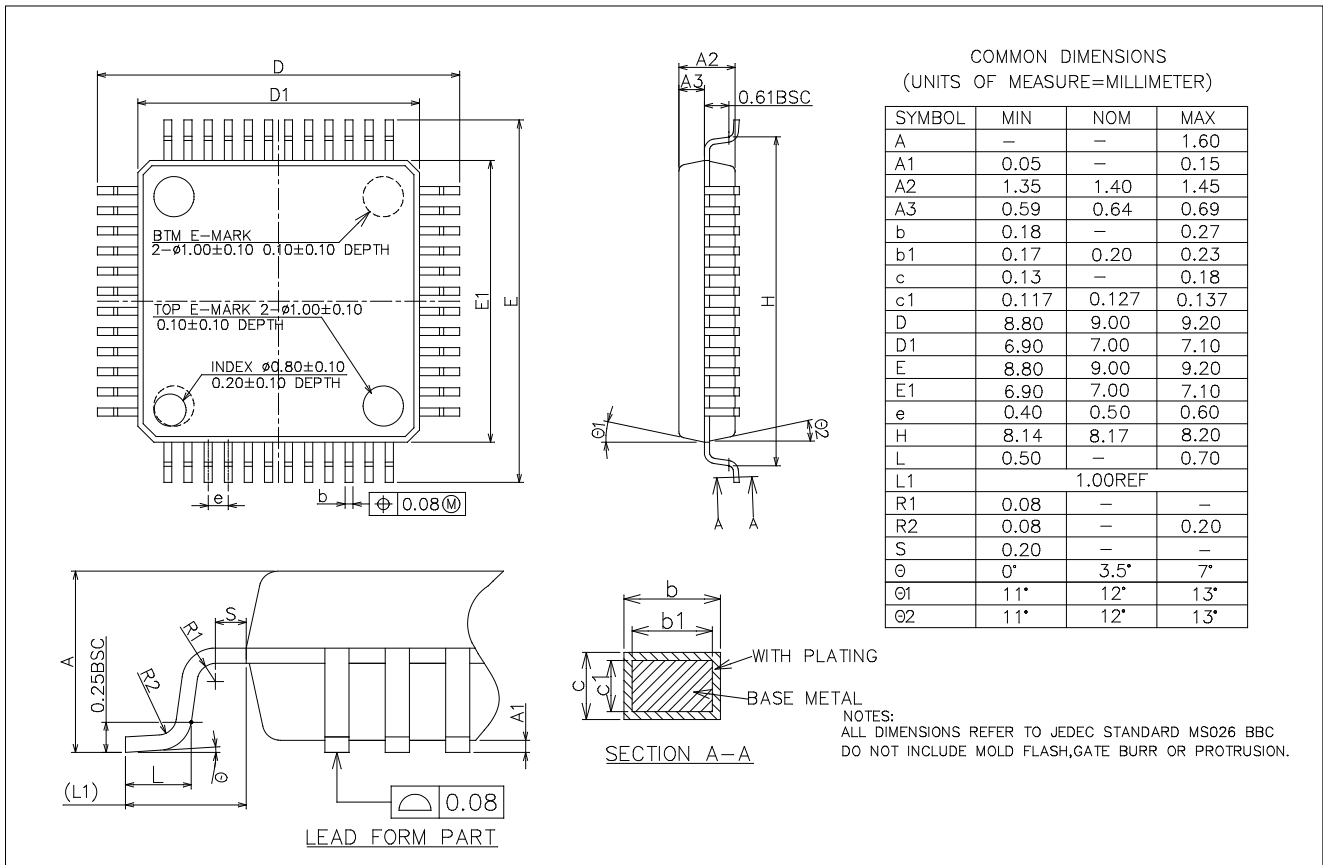
### 3.2 LQFP48 Package

#### 3.2.1 LQFP48 Pin Assignment



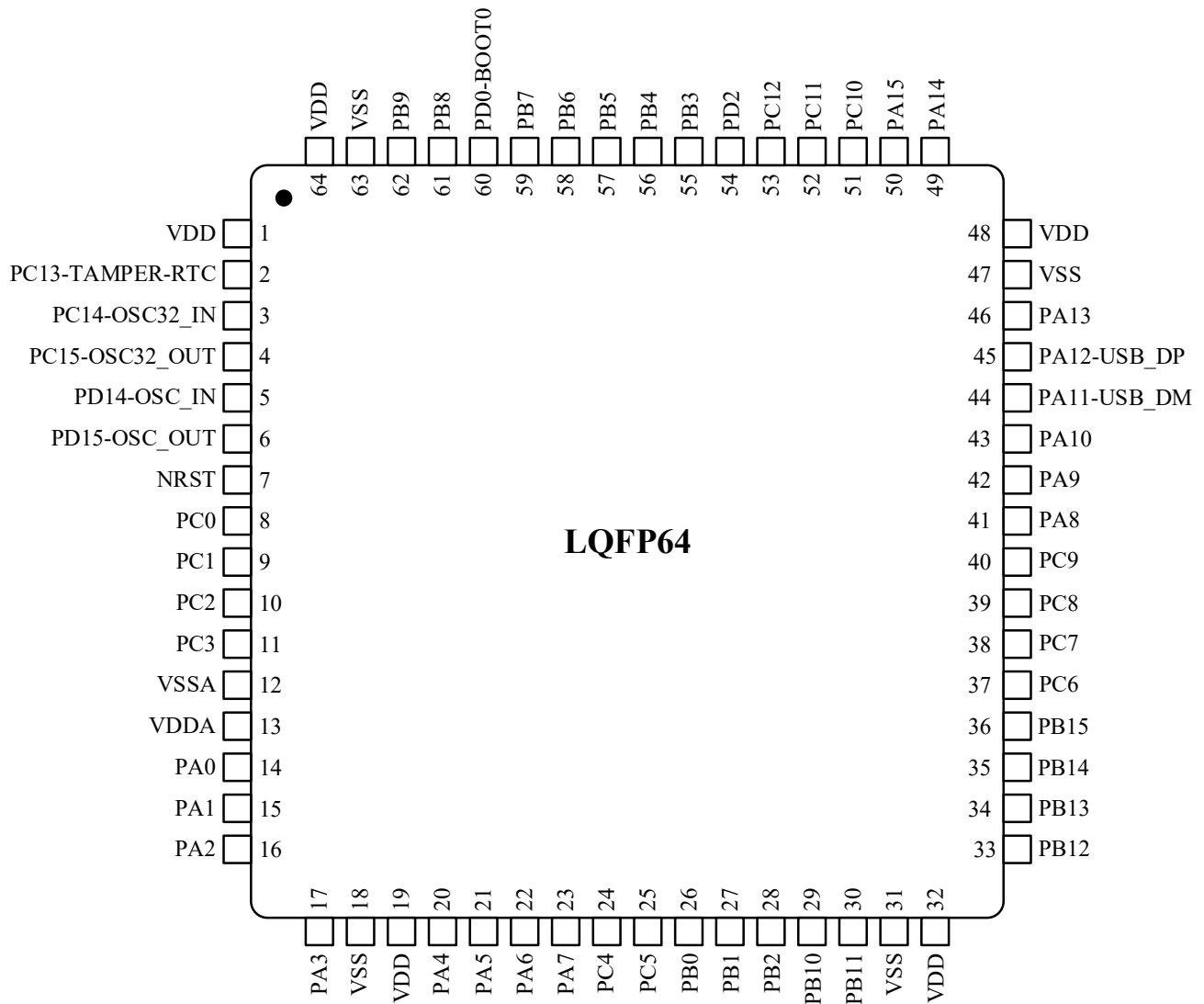


**3.2.2 LQFP48(7mm x 7mm) Package Dimensions**

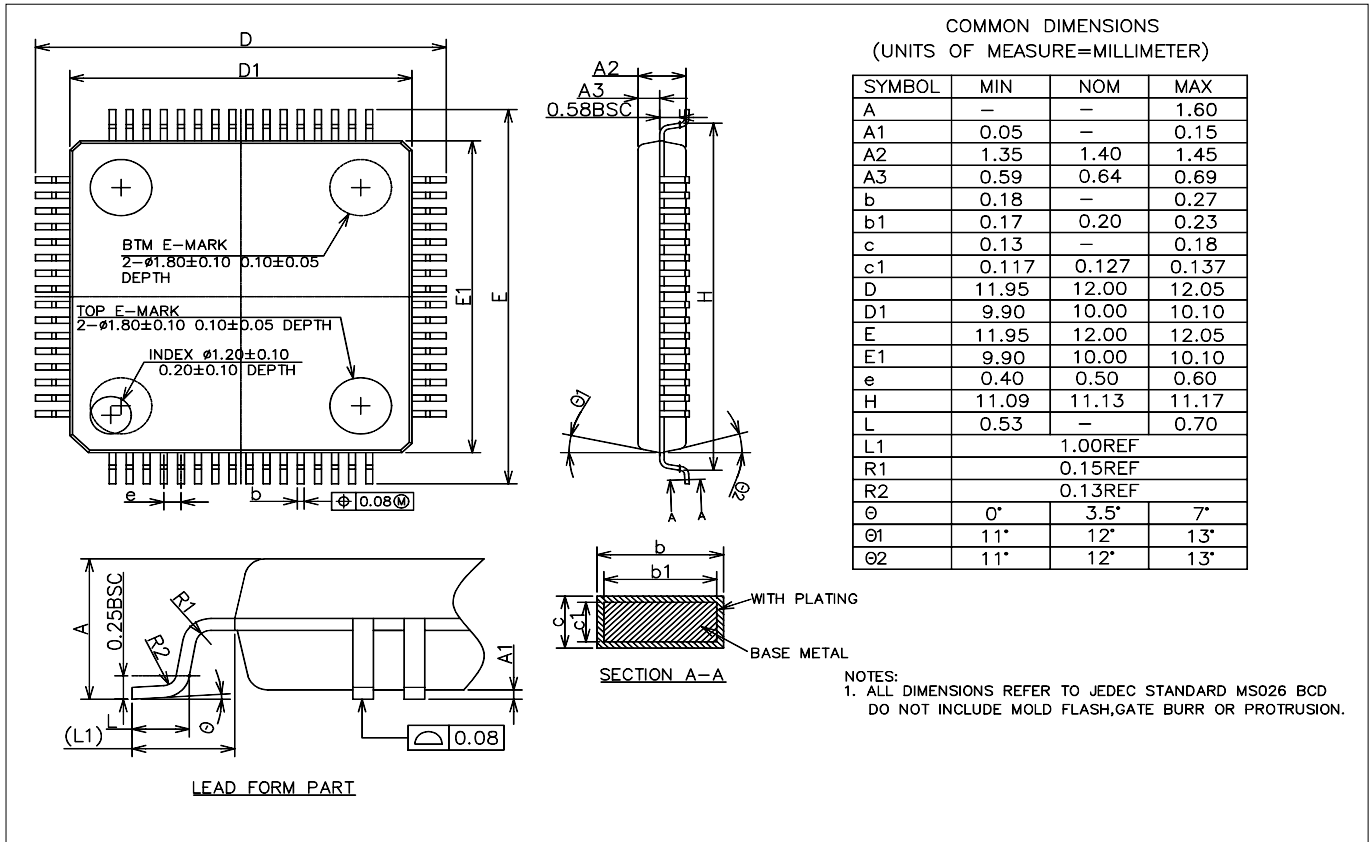


### 3.3 LQFP64 Package

#### 3.3.1 LQFP64 Pin Assignment



**3.3.2 LQFP64(10mm x 10mm) Package Dimensions**



## 4 Version History

<b>Version</b>	<b>Date</b>	<b>Changes</b>
V1.0	2020.6.12	Initial release
V1.2	2021.4.14	Updated product model resource configuration
V1.3	2022.7.6	Modify the description of low power

## 5 Disclaimer

This document is the exclusive property of NSING TECHNOLOGIES PTE. LTD.(Hereinafter referred to as NSING). This document, and the product of NSING described herein (Hereinafter referred to as the Product) are owned by NSING under the laws and treaties of Republic of Singapore and other applicable jurisdictions worldwide. The intellectual properties of the product belong to Nations Technologies Inc. and Nations Technologies Inc. does not grant any third party any license under its patents, copyrights, trademarks, or other intellectual property rights. Names and brands of third party may be mentioned or referred thereto (if any) for identification purposes only. NSING reserves the right to make changes, corrections, enhancements, modifications, and improvements to this document at any time without notice. Please contact NSING and obtain the latest version of this document before placing orders. Although NATIONS has attempted to provide accurate and reliable information, NATIONS assumes no responsibility for the accuracy and reliability of this document. It is the responsibility of the user of this document to properly design, program, and test the functionality and safety of any application made of this information and any resulting product. In no event shall NATIONS be liable for any direct, indirect, incidental, special, exemplary, or consequential damages arising in any way out of the use of this document or the Product. NATIONS Products are neither intended nor warranted for usage in systems or equipment, any malfunction or failure of which may cause loss of human life, bodily injury or severe property damage. Such applications are deemed, Insecure Usage'. Insecure usage includes, but is not limited to: equipment for surgical implementation, atomic energy control instruments, airplane or spaceship instruments, all types of safety devices, and other applications intended to supporter sustain life. All Insecure Usage shall be made at user's risk. User shall indemnify NATIONS and hold NATIONS harmless from and against all claims, costs, damages, and other liabilities, arising from or related to any customer's Insecure Usage Any express or implied warranty with regard to this document or the Product, including, but not limited to. The warranties of merchantability, fitness for a particular purpose and non-infringement are disclaimed to the fullest extent permitted by law. Unless otherwise explicitly permitted by NATIONS, anyone may not use, duplicate, modify, transcribe or otherwise distribute this document for any purposes, in whole or in part.