

# User Guide

---

## BOOT Interface Instruction User Guide

---

### Introduction

The user guide mainly describes the BOOT interface instructions of N32G43x series, N32L40x series and N32L43x series MCU, which is easy to download and develop by using the Nsing technology BOOT Loader.

This document is only applicable to Nsing MCU products. Currently, the supported product series include N32G43x series, N32L40x series, N32L43x series.

### Content

1	BOOT Brief Introductions .....	2
---	--------------------------------	---

<b>2</b>	<b>BOOT Process and Command Processing .....</b>	<b>3</b>
2.1	Commands and Data Structures .....	3
2.1.1	Commands List .....	3
2.1.2	Data Structure .....	3
2.2	Command Description.....	4
2.2.1	CMD_SET_BR .....	4
2.2.2	CMD_GET_INF .....	8
2.2.3	CMD_KEY_RNG .....	9
2.2.4	CMD_KEY_UPDATE .....	9
2.2.5	CMD_FLASH_ERASE .....	11
2.2.6	CMD_FLASH_DWNLD .....	12
2.2.7	CMD_DATA_CRC_CHECK .....	14
2.2.8	CMD_OPT_RW .....	15
2.2.9	CMD_USERX_OP .....	16
2.2.10	CMD_SYS_RESET .....	19
2.3	Returns the Status Word Description .....	19
2.3.1	Returns the Success Status Word.....	19
2.3.2	Returns the Failure Status Word .....	20
2.3.3	Return Other Status Word.....	20
<b>3</b>	<b>BOOT Usage Instructions .....</b>	<b>21</b>
3.1	Upper Computer Control Process.....	21
3.1.1	Erase Command Control Flowchart.....	21
3.1.2	Download Command Control Flowchart.....	22
3.1.3	Update Key Command Control Flowchart .....	23
3.1.4	Partition Operation Command Flowchart .....	24
3.1.5	Option Byte Read/Write Command Control Flowchart.....	24
<b>4</b>	<b>Version History .....</b>	<b>26</b>
<b>5</b>	<b>Disclaimer .....</b>	<b>27</b>

# 1 BOOT Brief Introductions

The user guide applicable to N32L40x, N32L43x, N32G43x series chips, provides user download function instructions, as follows:

- Interface support:
  - Supports USART1 interface. Refer Section 2.2.1 for details about the baud rate
    1. N32L40x, N32L43x, N32G43x series MCU support baud rate negotiation, interface IOs are PA9(TX), PA10(RX)
  - Supports USB interface, download using DFU protocol
  - Difference between USART automatic baud rate detection and USART baud rate negotiation:
    1. USART automatic baud rate detection:

After power-on, 0x7F is transmitted through the USART of the upper computer. MCU detects the data transmitted by the upper computer and identifies the baud rate of USART communication. This method is not supported by N32L40x, N32L43x, and N32G43x series MCU.
    2. USART baud rate negotiation:

After power-on, when the upper computer communicates with the universal MCU through the USART, the baud rate of 9600bps will be used first for communication. Then the CMD\_SET\_BR command is used to reset the baud rate, and the response will take effect after success. If the specified baud rate is not supported, the state will return to failure. The N32L40x, N32L43x, and N32G43x series all support this method.
- Supports Flash erasure (make sure the page has been erased before downloading)
- Supports data or program download function
- Supports download data CRC32 verification
- Supports power-on BOOT self-verification
- Supports jump to the user area for execution
- Supports software reset chip operation
- Supports Flash partition and key authentication during partition erase or programming.
- Supports partition key update
- Supports encrypted download (AES-128 ECB)

This document describes in detail the functions, implementation and usage of the universal MCU chip BOOT.

## 2 BOOT Process and Command Processing

The BOOT program supports downloading user programs and data through USART/USB interfaces. During power-on, the interface is automatically identified. The following describes the command processing process.

### 2.1 Commands and Data Structures

#### 2.1.1 Commands List

**Table 2-1 Command Definition**

Name of the Command	Key Value	Description
CMD_SET_BR	0x01	Set the baud rate of the USART (Valid only when USART is used)
CMD_GET_INF	0x10	Read chip model index, BOOT version number, chip ID
CMD_GET_RNG	0x20	Get random number
CMD_KEY_UPDATE	0x21	Update the encryption download key or partition authentication key
CMD_FLASH_ERASE	0x30	Erase FLASH
CMD_FLASH_DWNLD	0x31	Download user programs to FLASH
CMD_DATA_CRC_CHECK	0x32	CRC verification download user program
CMD_OPT_RW	0x40	Read/configure option bytes (including read protection level, FLASH page write protection, data0/1 configuration, USER configuration)
CMD_USERX_OP	0x41	Get the partition USERX size and configure the partition USERX size
CMD_SYS_RESET	0x50	The system reset

#### 2.1.2 Data Structure

This section describes some conventions described in the following sections. "<>" represents fields that must be included, and "()" represents fields that must be included according to parameters.

- **Logical layer instruction data structure**

- Upper instruction structure:

<CMD\_H + CMD\_L + LEN + Par> + (DAT).

CMD\_H indicates the level-1 command field, and CMD\_L indicates the level-2 command field. LEN indicates the length of data to be transmitted. Par represents a four-byte command parameter. DAT represents the specific data transmitted from the upper level instruction to the lower level;

- Lower response structure:

< CMD\_H + CMD\_L + LEN > + (DAT) + <CR1+CR2>.

CMD\_H indicates the level-1 command field, and CMD\_L indicates the level-2 command field. The command fields at the lower level are the same as those at the upper level. LEN indicates the length of data to be transmitted. DAT indicates the specific data that the lower layer replies to the upper layer. CR1+CR2 indicates the command execution result returned to the upper layer. If the level-1 and level-2 command fields do not belong to any command, BOOT replies CR1=0xBB and CR2 = 0xCC.

- **Physical layer instruction data structure**

- USB interface instruction data structure

USB interface adopts DFU protocol, refer to 'DFU\_1.1' for details:

1. The upper computer transmits the upper instruction:

Use the **DFU\_DNLOAD** request to transmit the upper-layer instruction data.

2. The upper computer receives the lower-layer response command:

Use the **DFU\_GETSTATUS** request to receive the lower-layer reply instruction data.

- USART interface instruction data structure

1. The upper computer transmits the upper instruction:

STA1 + STA2 + {superstructure} + XOR.

STA1 and STA2 are the start bytes of commands transmitted through the USART. STA1=0xAA and STA2=0x55. The chip can use it to identify the serial port data stream transmitted by the upper computer. XOR represents the XOR operation value of the previous command byte (STA1 + STA2 + {superstructure}).

2. The upper computer receives the lower-layer response:

STA1 + STA2 + {lower response structure} + XOR.

STA1 and STA2 are the start bytes of commands transmitted through the serial port. STA1=0xAA and STA2=0x55. It is used for the upper computer to identify the chip and transmit serial port data stream XOR represents the XOR operation value of the previous command byte (STA1 + STA2 + {underlying reply structure}).

## 2.2 Command Description

### 2.2.1 CMD\_SET\_BR

This command is used to modify the USART baud rate, only applicable to BOOT versions that support baud rate negotiation, and effective only during serial port downloads.

**Upper-level instructions:**

Byte \ Bit	b7	b6	b5	b4	b3	b2	b1	b0
0(CMD_H)	0x01 Level-1 command field							
1(CMD_L)	0x00 Level-2 command field							
2~3(LEN)	Length of transmitting data: 0x00, 0x00							
4~7(Par)	Par[0~3] : set baud rate parameters							
(DAT)	None							

- Par[0~3], the USART baud rate negotiation value can be set to the maximum, the setting range is 2.4Kbps ~ 4.5Mbps
- Reserved value: 0x00

**Underlying response:**

Byte \ Bit	b7	b6	b5	b4	b3	b2	b1	b0
0(CMD_H)	0x01 Level-1 command field							
1(CMD_L)	0x00 Level-2 command field							
2~3(LEN)	Length of transmitting data: 0x00, 0x00							
(DAT)	None							
4(CR1)	Status byte 1							
5(CR2)	Status byte 2							

- Status bytes (CR1 and CR2) are divided into the following types according to command execution:
  - Return success: status flag bit (0xA0, 0x00).
  - Return failure: status flag bits (0xB0, 0x00).

The following are the baud rate values supported by baud rate negotiation ( ✓ indicates that baud rate negotiation is supported, and / indicates that baud rate negotiation is not supported) :

- The baud rates supported by the BOOT V1.1 version of N32L40x, N32L43x, and N32G43x series MCUs.

Clock Parameters (MHz)		Baud Rate											
		2400	4800	9600	14400	19200	38400	57600	115200	128000	256000	576000	923076
External Clock	4	✓	✓	✓	✓	✓	✓	✓	✓	✓	✓	✓	✓
	6	✓	✓	✓	✓	✓	✓	✓	✓	✓	✓	✓	✓
	8	✓	✓	✓	✓	✓	✓	✓	✓	✓	✓	✓	✓
	12	✓	✓	✓	✓	✓	✓	✓	✓	✓	✓	✓	✓
	16	✓	✓	✓	✓	✓	✓	✓	✓	✓	✓	✓	✓
	24	✓	✓	✓	✓	✓	✓	✓	✓	✓	✓	✓	✓
	32	✓	✓	✓	✓	✓	✓	✓	✓	✓	✓	✓	✓
Internal Clock	8	✓	✓	✓	✓	✓	✓	✓	✓	✓	✓	✓	✓

- The baud rates supported by the BOOT V1.2 version of N32L40x, N32L43x, and N32G43x series MCUs.

Clock Parameters (MHz)		Baud Rate																
		2400	4800	9600	14400	19200	38400	57600	115200	128000	256000	576000	923076	1M	1.5 M	2M	2.25 M	3M
External Clock	4	✓	✓	✓	✓	✓	✓	✓	✓	✓	✓	✓	✓	✓	✓	✓	/	✓
	6	✓	✓	✓	✓	✓	✓	✓	✓	✓	✓	✓	✓	✓	✓	✓	/	✓
	8	✓	✓	✓	✓	✓	✓	✓	✓	✓	✓	✓	✓	✓	✓	✓	/	✓
	12	✓	✓	✓	✓	✓	✓	✓	✓	✓	✓	✓	✓	✓	✓	✓	/	✓
	16	✓	✓	✓	✓	✓	✓	✓	✓	✓	✓	✓	✓	✓	✓	✓	/	✓
	24	✓	✓	✓	✓	✓	✓	✓	✓	✓	✓	✓	✓	✓	✓	✓	/	✓
	32	✓	✓	✓	✓	✓	✓	✓	✓	✓	✓	✓	✓	✓	✓	✓	/	✓
Internal Clock	8	✓	✓	✓	✓	✓	✓	✓	✓	✓	✓	✓	✓	✓	/	/	/	/



## 2.2.2 CMD\_GET\_INF

The command reads the BOOT version number, chip model index, chip ID, and chip serialization information.

### Upper-level instructions:

Byte \ Bit	b7	b6	b5	b4	b3	b2	b1	b0
0(CMD_H)	0x10 Level-1 command field							
1(CMD_L)	0x00 Level-2 command field							
2~3 (LEN)	Length of transmitting data							
4~7(Par)	Reserved							
(DAT)	None							

- Reserved value: 0x00.
- LEN is the length of transmitting data: 0x00(LEN[0]), 0x00(LEN[1]),  $LEN = LEN[0] + (LEN[1] \ll 8)$ .

### Underlying response:

Byte \ Bit	b7	b6	b5	b4	b3	b2	b1	b0
0(CMD_H)	0x10 Level-1 command field							
1(CMD_L)	0x00 Level-2 command field							
2~3 (LEN)	The length of the data							
4~54(DAT)	BOOT version number, chip model index, chip ID, and chip serialization							
55(CR1)	Status byte 1							
56(CR2)	Status byte 2							

- The procedure byte (CMD\_H) corresponds to the upper instruction (CMD\_H).
- LEN is the length of transmitting data: 0x33(LEN[0]), 0x00(LEN[1]),  $LEN = LEN[0] + (LEN[1] \ll 8)$ .
- DAT[0] : Chip model index  
Product number: 0x01
- DAT[1] : 0xXY, BOOT command set version number (BCD code)  
0x10: indicates the command set version used by BOOT, indicating that V1.0 command set version is used
- DAT[2] : BOOT code version
- DAT[3~50] 48Byte
  - DAT[3~18] : 16Byte UCID (for example, 36 01 01 A0 15 50 36 33 50 30 35 30 30 30 09 7D 22)
  - DAT[19~30] : 12Byte Chip ID(UID) (example: 36 01 01 50 36 33 50 30 35 09 7D 22)
  - DAT[31~34] : 4Byte DBGMCU\_IDCODE (example: 01 54 87 F8)  
UCID/ UID/ DBGMCU\_IDCODE for details, refer to UM\_N32G45x Series User Manual, UM\_N32G4FR Series User Manual, UM\_N32WB452 Series User Manual, UM\_N32G43x Series User Manual, UM\_N32L40x Series User Manual, UM\_N32L43x Series User Manual
  - DAT[35~50] : 16 bytes (reserved);

- Status bytes (CR1 and CR2) are divided into the following types according to command execution:
  - Return success: status flag bit (0xA0, 0x00).
  - Return failure: status flag bits (0xB0, 0x00).

### 2.2.3 CMD\_KEY\_RNG

Gets the random number of the key that the user needs to verify.

#### Upper-level instructions:

Byte \ Bit	b7	b6	b5	b4	b3	b2	b1	b0
0(CMD_H)	0x20 Level-1 command field							
1(CMD_L)	0x00 Level-2 command field							
2~3(LEN)	Length of transmitting data							
4~7(Par)	Reserved							
(DAT)	None							

- Reserved value: 0x00;
- LEN is the length of transmitting data: 0x00(LEN[0]), 0x00(LEN[1]),  $LEN = LEN[0] + (LEN[1] \ll 8)$ .

#### Underlying response:

Byte \ Bit	b7	b6	b5	b4	b3	b2	b1	b0
0(CMD_H)	0x20 Level-1 command field							
1(CMD_L)	0x00 Level-2 command field							
2~3(LEN)	Length of transmitting data							
4~19(DAT)	A true random number of 16Bytes							
20(CR1)	Status byte 1							
21(CR2)	Status byte 2							

- LEN is the length of transmitting data: 0x10(LEN[0]), 0x00(LEN[1]),  $LEN = LEN[0] + (LEN[1] \ll 8)$ .
- The true random number of 16 bytes is generated by the chip.
- Status bytes (CR1 and CR2) are divided into the following types according to command execution:
  - Return success: status flag bit (0xA0, 0x00).
  - Return failure: status flag bits (0xB0, 0x00).

### 2.2.4 CMD\_KEY\_UPDATE

The user can update the encryption download key and partition authentication key. Before updating, the user needs to use CMD\_KEY\_RNG to obtain a random number. The random number is used by the upper computer to produce a 16Bytes old key authentication value, which is then transmitted to the BOOT by using the CMD\_KEY\_UPDATE command. This verifies whether to update the key. The new key needs to be decrypted with the old key.

#### Upper-level instructions:

Byte \ Bit	b7	b6	b5	b4	b3	b2	b1	b0
------------	----	----	----	----	----	----	----	----

0(CMD_H)	0x21 Level-1 Command field
1(CMD_L)	Secondary command field: KEY index ID
2~3(LEN)	Length of transmitting data
4~7(Par)	Reserved value: 0x00
8~55(DAT)	DAT[0~15] : 16Bytes old key authentication value
	DAT[16~31] : indicates the new encryption value of 16 bytes
	DAT[32~47] : indicates the CRC32 encryption value 4Bytes CRC32 check value (old key + new key) + 12Bytes fill the value 0x00 The 16Bytes of data are then encrypted with the old key

- CMD\_L: indicates the ID of the key index to be updated
  - ID(0x00-0x1f) : indicates the ID of the key index.
- LEN is the length of transmitting data: 0x30(LEN[0]), 0x00(LEN[1]),  $LEN = LEN[0] + (LEN[1] \ll 8)$ .
- Reserved value: 0x00.
- DAT[32~47] : indicates the CRC32 verification value.
- DAT[0~15] : a 16-bit random number obtained by CMD\_KEY\_RNG and an authentication value generated by the old key.
- DAT[16-31] : indicates a new key encrypted with the old key. BOOT decrypts the new key with the old key and then stores it.

**Underlying response:**

Byte \ Bit	Bit	b7	b6	b5	b4	b3	b2	b1	b0
0(CMD_H)		0x21 Level-1 Command field							
1(CMD_L)		Secondary command field: key ID							
2~3(LEN)		Length of transmitting data							
(DAT)		None							
4(CR1)		Status byte 1							
5(CR2)		Status byte 2							

- LEN is the length of transmitting data: 0x00(LEN[0]), 0x00(LEN[1]),  $LEN = LEN[0] + (LEN[1] \ll 8)$ .
- Status bytes (CR1 and CR2) are divided into the following types according to command execution:
  - Return success: status flag bit (0xA0, 0x00).
  - Return failure: status flag bits (CR1, CR2)
    1. (0xB0, 0x00) : return failed.
    2. (0xB0, 0x10) : the key index ID range is incorrect.
    3. (0xB0, 0x11) : the CRC check of the new key is incorrect.

4. (0xB0, 0x20) : authentication of the old key fails.
5. (0xB0, 0x21) : the number of old key authentication failures exceeds the limit.
6. (0xB0, 0x3F) : failed to update the management information.

## 2.2.5 CMD\_FLASH\_ERASE

BOOT erases the FLASH by page. The page address number and page number can be specified by the user. The erasure space cannot exceed the entire Flash space and at least one page must be erased.

If the authentication function is enabled, the CMD\_KEY\_RNG command is used to obtain a random number and perform authentication before erasing function.

### Upper-level instructions:

Byte \ Bit	b7	b6	b5	b4	b3	b2	b1	b0
0(CMD_H)	0x30 Level-1 command field							
1(CMD_L)	Level-2 command field: erase partition number							
2~3(LEN)	Length of transmitting data							
4~7(Par)	Page address number 2 bytes: 0 to 255 Page Number 2 bytes :1 to 256							
8~23(DAT)	DAT[0~15] : 16 bytes User1/2/3 partition authentication key authentication value, used only when authentication is enabled							

- CMD\_L: erases the partition number
  - 0 x00 = USER1;
  - 0 x01 = USER2;
  - 0 x02 = USER3;
- LEN is the length of transmitting data: 0x10 (LEN[0]), 0x00(LEN[1]),  $LEN = LEN[0] + (LEN[1] \ll 8)$ .
- The erase address and range consist of four bytes in the Par field

Par[0~1] : page address number 2 bytes (0~255)

Page address = Par [0] + (Par [1] <<8);

Par[2~3] : Page number 2 bytes (1~256)

Page count = Par [2] + (Par [3] <<8);

The beginning address of page 0 is 0x0800\_0000. The number of subsequent pages is incremented by 1, and the first address is incremented by 0x800.

For example, The beginning address of page 1 is  $0x0800\_0000 + 1 * 0x800 = 0x0800\_0800$

The beginning address of page 2 is  $0x0800\_0000 + 2 * 0x800 = 0x0800\_1000$

The entire address range erased

For example, the page address is 0x01 and the number of pages is 0x02

Erasing address range:

$(0x0800\_0000 + 1 * 0x800) \sim (0x0800\_0000 + 1 * 0x800 + 2 * 0x800)$

That is, (first address of the page number) to (First address of the page number + number of pages x page size)

**Underlying response:**

Byte \ Bit	b7	b6	b5	b4	b3	b2	b1	b0
0(CMD_H)	0x30 Level-1 command field							
1(CMD_L)	Secondary command field: erase area							
2~3(LEN)	Length of transmitting data							
(DAT)	None							
4(CR1)	Status byte 1							
5(CR2)	Status byte 2							

- LEN is the length of transmitting data: 0x00(LEN[0]), 0x00(LEN[1]),  $LEN = LEN[0] + (LEN[1] \ll 8)$ .
- Status bytes (CR1 and CR2) are divided into the following types according to command execution:
  - Return success: status flag bit (0xA0, 0x00).
  - Return failure: status flag bits (CR1, CR2).
    1. (0xB0, 0x00) : return failed.
    2. (0xB0, 0x20) : key authentication fails.
    3. (0xB0, 0x21) : the number of key authentication failures exceeds the limit.
    4. (0xB0, 0x30) : the erased Flash page is protected by RDP.
    5. (0xB0, 0x31) : the erased Flash page is protected by WRP.
    6. (0xB0, 0x32) : deletes the Flash page to be partitioned.
    7. (0xB0, 0x34) : erasing the Flash address range exceeds the threshold (indicates that the Flash size exceeds the threshold).
    8. (0xB0, 0x37) : failed to erase the Flash.
    9. (0xB0, 0x3F) : failed to update the management information.
    10. (0xB0, 0x3F) : failed to update the management information.

## 2.2.6 CMD\_FLASH\_DWNLD

This command provides the user to download the code into the specified Flash, and the data length must be 16 bytes aligned (if less than 16 byte, 0x00 will be automatically added by the upper computer), which is provided by the upper-layer command.

When authentication or encryption is enabled, the CMD\_KEY\_RNG command is used to obtain a random number before authentication or encryption is enabled. For partition authentication and encryption download, you need to provide the partition number. The data downloaded with encryption is first decrypted into plaintext using the encryption download key (the key corresponding to the partition authentication), and then written to Flash.

**Upper-level instructions:**

Byte \ Bit	b7	b6	b5	b4	b3	b2	b1	b0
1(CMD_H)	0x31 Level-1 command field							
2(CMD_L)	Secondary command field: Download partition number							
3~4(LEN)	Length of transmitting data							

5~8(Par)	Start address of Flash for downloading
8~23+N(DAT)	DAT[0~15] : 16 bytes Key authentication value for user1/2/3 partition authentication DAT[16~16+N] : specific data downloaded (encrypted or unencrypted) DAT[N+1~N+4] : indicates the 4 byte CRC32 check value of unencrypted data

- **CMD\_L**: indicates the number of the download partition
  - 0x00 = USER1;
  - 0x01 = USER2;
  - 0x02 = USER3;
- **LEN** is the length of transmitting data: 0xXX(LEN[0]), 0xXX(LEN[1]),  $LEN = LEN[0] + (LEN[1] \ll 8)$
- **Par [0 ~ 3]**: download the starting address of the Flash, synthetic rules to address =  $Par [0] \ll 8 \mid \mid Par [1] \ll Par [2] \mid Par [3] \ll \ll \ll 16$  to 24.
- **DAT [0~15]**, Reserved.
- **DAT[16~16+N]** : Specific data to be downloaded
  - **USB**: a maximum of 128 bytes,  $15 \leq N \leq 143$ , N+1 must be a multiple of 16.
  - **USART**: contains a maximum of 128 bytes.  $15 \leq N \leq 143$ . N+1 must be a multiple of 16.
- **DAT[N+1 to N+4]** : 4Byte CRC32 check value of unencrypted data

**Underlying response:**

Byte \ Bit	b7	b6	b5	b4	b3	b2	b1	b0
0(CMD_H)	0x31 Level-1 command field							
1(CMD_L)	Secondary command field: Download partition number							
2(LEN)	Length of transmitting data							
(DAT)	None							
3(CR1)	Status byte 1							
4(CR2)	Status byte 2							
5(XOR)	Xor result							

- **LEN** is the length of transmitting data: 0x00 (LEN[0]), 0x00(LEN[1]),  $LEN = LEN[0] + (LEN[1] \ll 8)$ .
- **Status bytes (CR1 and CR2)** are divided into the following types according to command execution:
  - **Download success**: status flag bit (0xA0, 0x00).
  - **Download failed**: status flag bit (CR1, CR2).
    1. (0xB0, 0x00) : return failed.
    2. (0xB0, 0x20) : key authentication fails.
    3. (0xB0, 0x21) : the number of key authentication failures exceeds the limit.
    4. (0xB0, 0x30) : the downloaded Flash address is protected by RDP.
    5. (0xB0, 0x31) : the downloaded Flash address is protected by WRP.
    6. (0xB0, 0x32) : the downloaded Flash address is protected by a partition.
    7. (0xB0, 0x33) : download Flash address range across partitions;

8. (0xB0, 0x34) : the address range of the downloaded Flash exceeds the threshold.
9. (0xB0, 0x35) : download Flash start address is not 16-byte alignment;
10. (0xB0, 0x36) : the downloaded Flash data length is not a multiple of 16.
11. (0xB0, 0x37) : programming the Flash fails.
12. (0xB0, 0x3F) : the management information fails to be updated.

### 2.2.7 CMD\_DATA\_CRC\_CHECK

This command is used to check whether the downloaded data is correct. Considering the download speed and low probability of download failure, the CRC check is performed after the downloaded data is complete. The upper-layer command must provide the CRC value, start address, and check length of the downloaded data.

When authentication is enabled, the CMD\_KEY\_RNG command is used to obtain a random number and perform authentication before CRC verification.

#### Upper-level instructions:

Byte \ Bit	b7	b6	b5	b4	b3	b2	b1	b0
0(CMD_H)	0x32 Level-1 command field							
1(CMD_L)	Level-2 command field: parity partition number							
2~3(LEN)	Length of transmitting data							
4~7(Par)	32-bit CRC check value							
8~31(DAT)	DAT[0~15] : 16 bytes key authentication value for user1/2/3 partition authentication DAT[16~19] : indicates the start IP address of the verification DAT[20~23] : verification length (in bytes, minimum length 2KB)							

- CMD\_L: indicates the verification partition number
  - 0x00 = USER1;
  - 0x01 = USER2;
  - 0x02 = USER3;
- LEN is the length of transmitting data:  $0x18(LEN[0]), 0x00(LEN[1]), LEN = LEN[0] + (LEN[1] \ll 8)$ .
- Par[0~3]: 32 bit CRC checksum value, the synthetic rules for CRC32 =  $Par[0] | Par[1] \ll 8 | Par[2] \ll 16 | Par[3] \ll 24$ .
- DAT[0:15] : authentication key authentication value
- DAT[16~19]: check the starting address, the synthesis rules to address =  $DAT [16] | DAT [17] \ll 8 | DAT [18] \ll 16 | DAT [19] \ll 24$ , the address can only be in the range of the Flash.
- DAT[20~23]: check length, its synthesis rules for  $CRC\_LEN = DAT [20] | DAT [21] \ll 8 | DAT [22] \ll 16 | DAT [23] \ll 24$ , CRC\_LEN is only within the effective range, length is larger than 2 KB, and is a multiple of 16.

#### Underlying response:

Byte \ Bit	b7	b6	b5	b4	b3	b2	b1	b0
0(CMD_H)	0x32 Level-1 command field							
1(CMD_L)	Level 2 command field: verification partition number							
2~3(LEN)	Length of transmitting data							

(DAT)	None
4(CR1)	Status byte 1
5(CR2)	Status byte 2

- LEN is the length of transmitting data: 0x00(LEN[0]), 0x00(LEN[1]),  $LEN = LEN[0] + (LEN[1] \ll 8)$ .
- Status bytes (CR1 and CR2) are divided into the following types according to command execution:
  - Verification succeeded: status flag bit (0xA0, 0x00).
  - Verification failure: status flag bits (CR1, CR2)
    1. (0xB0, 0x00) : return failed.
    2. (0xB0, 0x20) : CRC verification key authentication fails.
    3. (0xB0, 0x21) : the number of CRC key authentication failures exceeds the limit.
    4. (0xB0, 0x32) : indicates that CRC check addresses are protected by partitions.
    5. (0xB0, 0x33) : indicates that the ADDRESS range of CRC check is across partitions.
    6. (0xB0, 0x34) : Indicates that the ADDRESS range of CRC check exceeds the threshold.
    7. (0xB0, 0x35) : indicates that CRC addresses are not aligned with 16 bytes.
    8. (0xB0 or 0x36) : indicates that the CRC verification length is not a multiple of 16 or less than 2KB.
    9. (0xB0, 0x38) : CRC verification fails.
    10. (0xB0, 0x3F) : the management information fails to be updated.

### 2.2.8 CMD\_OPT\_RW

This command is used for option byte read and write (including read protection level, Flash page write protection, Data0/1 configuration, and USER configuration).

**Upper-level instructions:**

Byte \ Bit	b7	b6	b5	b4	b3	b2	b1	b0
0(CMD_H)	0x40 Level-1 command field							
1(CMD_L)	Secondary command field							
2~3(LEN)	Length of transmitting data							
4~7(Par)								
8~27(DAT)	Option byte configures 20 bytes							

- CMD\_L secondary command field:
  - 0x00: gets option bytes.
  - 0x01: configuration option byte.
  - 0x02: configuration option byte, reset again.
- LEN is the length of transmitting data: 0x14(LEN[0]), 0x00(LEN[1]),  $LEN = LEN[0] + (LEN[1] \ll 8)$ .
- DAT[0~19] : option byte 20 bytes
  - RDP, nRDP, USER, nUSER, Data0, nData0, Data1, nData1, WRP0, nWRP0, WRP1, nWRP1, WRP2, nWRP2, WRP3, nWRP3, RDP2, nRDP2, Reserved, nReserved;
  - CMD\_L = 0x00: all values are 0x00.



- CMD\_L = 0x01/0x02: configuration option bytes are the values to be written.

**Underlying response:**

Byte \ Bit	b7	b6	b5	b4	b3	b2	b1	b0
0(CMD_H)	0x40 Level-1 command field							
1(CMD_L)	Secondary command field							
2~3(LEN)	Length of transmitting data							
4~23(DAT)	Option byte configures 20 bytes							
24(CR1)	Status byte 1							
25(CR2)	Status byte 2							

- LEN is the length of transmitting data: 0x14(LEN[0]), 0x00(LEN[1]),  $LEN = LEN[0] + (LEN[1] \ll 8)$ .
- DAT[0~19] : the current option contains 20 bytes  
RDP, nRDP, USER, nUSER, Data0, nData0, Data1, nData1, WRP0, nWRP0, WRP1, nWRP1, WRP2, nWRP2, WRP3, nWRP3, RDP2, nRDP2, Reserved, nReserved;
- Status bytes (CR1 and CR2) are divided into the following types according to command execution:
  - Return success: status flag bit (0xA0, 0x00).
  - Check failure: status flag bits (CR1, CR2)
    1. (0xB0, 0x00) : return failed.

### 2.2.9 CMD\_USERX\_OP

This command is used to read or configure the size of the user1/2/3 partition. After the partition is configured, the partition is automatically sealed. The user1/2/3 partition can be configured only once. The software determines whether the NVR MMU partition has been configured (process variables or random delay are added to determine the NVR value).

The recommended configuration process is as follows:

- If you need to divide two areas, configure USER3 (automatic sealing after configuration completion). If you want to also seal USER1, configuring USER1 again. The size of USER1 + USER3 must be the size of the entire FLASH;
- If you need to divide three areas, configure USER3 (automatic sealing after configuration completion) and then USER2 (automatic sealing after configuration completion). If you want to also seal USER1, configure USER1 again. The size of USER1 + USER2 + USER3 must be the size of the entire FLASH.

**Upper-level instructions:**

Byte \ Bit	b7	b6	b5	b4	b3	b2	b1	b0
0(CMD_H)	0x41 Level-1 command field							
1(CMD_L)	Secondary command field							
2~3(LEN)	Length of transmitting data							
4~7(Par)	Par[0] : partition User1/2/3							
	Par [1] : partition user1/2/3 size							
	Par [2] : partition authentication key index ID							

	Par [3] : partition authentication and encryption download enable configuration
DAT	None

- CMD\_L: secondary command field:
  - 0x00: read partition user1/2/3 size configuration.
  - 0x01: partition user1/2/3 size, key ID, and partition authentication/encryption download are enabled.
- LEN is the length of transmitting data:  $0x00(\text{LEN}[0])$ ,  $0x00(\text{LEN}[1])$ ,  $\text{LEN} = \text{LEN}[0] + (\text{LEN}[1] \ll 8)$ .
- Par[0] : partition number
  - 0x00: partition USER1.
  - 0x01: partition USER2.
  - 0x02: partition USER3.

- Par [1] :
  - CMD\_L = 0x00: 0x00.
  - CMD\_L = 0x01: partition user1/2/3 size configuration

Input range for partition size: 0x1(16KB)... 0x1F(496KB), 0x20(512KB), USER1 + USER2 + USER3 = 512KB; The user area user1/2/3 is automatically sealed after size configuration.

Partition size and address determined:

The start address of the partition is 0x0800\_0000, and the end address of the partition is the start address plus the total FLASH capacity (for example, if the FLASH capacity is 512 KB, the end address is  $0x0800\_0000 + 512 * 0x800 = 0x0808\_0000$ ).

If USER1 is partitioned, the partition address of USER1 ranges from 0x0800\_0000 to  $(0x0800\_0000 + \text{USER1\_Size} * 0x4000)$ .

If USER3 is partitioned, the partition address of USER3 ranges from  $(0x0808\_0000 - \text{USER3\_Size} * 0x4000)$  to 0x0800\_8000 (for example, the last Flash address is 0x0808\_0000).

The initial address of the partition of USER2 is the last address of USER1 and the first address of USER3. If USER1 has no partition, the first address of USER2 needs to be determined by USER2\_Size.

- Par [2] :
  - CMD\_L = 0x00: 0xFF.
  - CMD\_L = 0x01: 0x00~0x1F encrypted download/partition authentication key index ID,  
0xFF indicates that the index ID is not configured. If the corresponding USERX is not configured with an ID, the value of Par[3] is not judged.
- Par [3] :
 

Enable configuration of partition authentication and encrypted download, 0xXY

X = 0 - If zone authentication is not enabled, set this parameter to 1.

X = 1 - If zone authentication is enabled, the value cannot be 0.

Y = 0 - If encrypted download is not enabled, set this parameter to 1.

Y = 1 - Encrypted download is enabled and cannot be set to 0.

  - CMD\_L = 0x00: read status, retain value 0x00

- CMD\_L = 0x01: configuration status, configuration value 0xXY

**Underlying response:**

Byte \ Bit	b7	b6	b5	b4	b3	b2	b1	b0
0(CMD_H)	0x41 Level-1 command field							
1(CMD_L)	Secondary command field							
2~3(LEN)	Length of transmitting data							
4~7(DAT)	DAT[0] : partition user1/2/3							
	DAT[1] : partition user1/2/3 size							
	DAT [2] : indicates the configuration status of the partition authentication key index ID							
	DAT [3] : read partition authentication and encryption download enable configuration							
8(CR1)	Status byte 1							
9(CR2)	Status byte 2							

- LEN is the length of transmitting data: 0x02(LEN[0]), 0x00(LEN[1]),  $LEN = LEN[0] + (LEN[1] \ll 8)$ .
- DAT[0] : indicates the partition number
  - 0x00: partition USER1.
  - 0x01: partition USER2.
  - 0x02: partition USER3.
- DAT[1] : Read the current partition user1/2/3 size  
 Partition size output range: 0x0(0KB), 0x1(16KB)... 0x1F (496 KB), 0x20 (512 KB).  
 0x0 indicates that the partition size is not configured.  $USER1 + USER2 + USER3 = 512KB$ .
- DAT [2].
  - 0x00, the ID has been configured.
  - 0xFF, ID is not configured
- DAT [3] :  
 Read partition authentication and encryption download enable configuration, 0xXY  
 X = 0 - If zone authentication is not enabled, set this parameter to 1.  
 X = 1 - If zone authentication is enabled, the value cannot be 0.  
 Y = 0 - If encrypted download is not enabled, set this parameter to 1.  
 Y = 1 - Encrypted download is enabled and cannot be set to 0.
- Status bytes (CR1 and CR2) are divided into the following types according to command execution:
  - Return success: status flag bit (0xA0, 0x00).
  - Return failure: status flag bit (0x70, 0x00)
    1. (0xB0, 0x00) : return failed.
    2. (0xB0, 0x10) : the key index ID range is incorrect.
    3. (0xB0, 0x3A) : the partition size has been configured and cannot be configured again.

4. (0xB0, 0x3B) : the partition size is incorrectly configured. USER1 + USER2 + USER3 = FLASH capacity. The minimum value for user1/2 /2/3 is 0x01(16KB).
5. (0xB0, 0x3C) : the partition configuration sequence is incorrect and USER1 or USER3 must be configured first.
6. (0xB0, 0x3D) : the partition key index ID fails to be configured or has been configured.
7. (0xB0, 0x3E) : the configuration of zone authentication and encryption download fails or has been configured.
8. (0xB0, 0x3F) : failed to update the management information.

## 2.2.10 CMD\_SYS\_RESET

This command is used to reset the BOOT program.

### Upper-level instructions:

Byte \ Bit	b7	b6	b5	b4	b3	b2	b1	b0
0(CMD_H)	0x50 Level-1 command field							
1(CMD_L)	0x00 Level-2 command field							
2~3(LEN)	Length of transmitting data							
4~7(Par)	Reserved							
(DAT)	None							

- Reserved value: 0x00;

### Underlying response:

Byte \ Bit	b7	b6	b5	b4	b3	b2	b1	b0
0(CMD_H)	0x50 Level-1 command field							
1(CMD_L)	0x00 Level-2 command field							
2~3(LEN)	Length of transmitting data							
(DAT)	None							
4(CR1)	Status byte 1							
5(CR2)	Status byte 2							

- Status bytes (CR1 and CR2) are divided into the following types according to command execution:
  - Return success: status flag bit (0xA0, 0x00).
  - Return failure: status flag bits (0xB0, 0x00).

## 2.3 Returns the Status Word Description

### 2.3.1 Returns the Success Status Word

Return success: status flag bit (0xA0, 0x00). It indicates that the command delivered by the upper layer is successfully executed. The returned success status word contains the returned value of the read, update, and configuration commands.

### 2.3.2 Returns the Failure Status Word

Return failure: status flag bits (0xB0, 0x00). It indicates that the command delivered by the upper layer fails to be executed due to other reasons (such as incorrect command acceptance format or timeout). Failure status word is returned.

### 2.3.3 Return Other Status Word

The following return status words also indicate return failure. The second byte status word indicates a different error type.

- (0xB0, 0x10) : the key index ID range is incorrect.
- (0xB0, 0x11) : the CRC check of the new key is incorrect.
- (0xB0, 0x20) : key authentication fails.
- (0xB0, 0x21) : the number of key authentication failures exceeds the limit.
- (0xB0, 0x30) : eraser/download Flash page protected by RDP;
- (0xB0, 0x31) : erasing/downloading Flash pages are protected by WRP.
- (0xB0, 0x32) : erase/download /CRC addresses are protected by partitions.
- (0xB0, 0x33) : erase/download /CRC check address range across partitions;
- (0xB0, 0x34) : the address range of erase/download /CRC is out of bounds (indicating that the size of the FLASH exceeds the limit).
- (0xB0, 0x35) : the start address of erase/download /CRC is not 16-byte alignment;
- (0xB0, 0x36) : indicates that the length of the downloaded /CRC data is not a multiple of 16. Data length indicates the length of erasing FLASH, or the length of downloading code to FLASH, or the length of Flash CRC values;
- (0xB0, 0x37) : erasing or downloading the FLASH program fails.
- (0xB0, 0x38) : CRC verification fails.
- (0xB0, 0x39) : a partition has been configured and the read protection level cannot be changed from L1 to L0.
- (0xB0, 0x3A) : the partition has been configured and cannot be configured again.
- (0xB0, 0x3B) : the partition size is incorrect.  $USER1 + USER2 + USER3 = FLASH$  capacity.
- (0xB0, 0x3C) : the partition configuration sequence is incorrect and USER1 or USER3 must be configured first.
- (0xB0, 0x3D) : the partition key index ID fails to be configured or has been configured.
- (0xB0, 0x3E) : the configuration of zone authentication and encryption download fails or has been configured.
- (0xB0, 0x3F) : failed to update the management information.
- (0xBB, 0xCC) : the level 1 and level 2 command fields do not belong to any command.

## 3 BOOT Usage Instructions

### 3.1 Upper Computer Control Process

Upper computer support user erasing Flash area, user code download, download code integrity check. By reading partition information, the upper computer automatically identifies the address range of erasing, downloading and checking entered by the user and requires authentication.

Upper computer supports users to choose whether to enable encryption download to protect user code.

Upper computer supports the user to read and configure the partition user1/2/3 size. The partition size cannot be changed after being configured.

Upper computer supports users to update the security key (used for partition authentication and encryption download).

Upper computer supports user update option byte reading and modification.

Upper computer supports software reset command and jump USER1 reset program entry address execution command.

**Enter BOOT:** after you enter the BOOT, the chip can interact with the PC TOOL through the USART1 interface or USB interface.

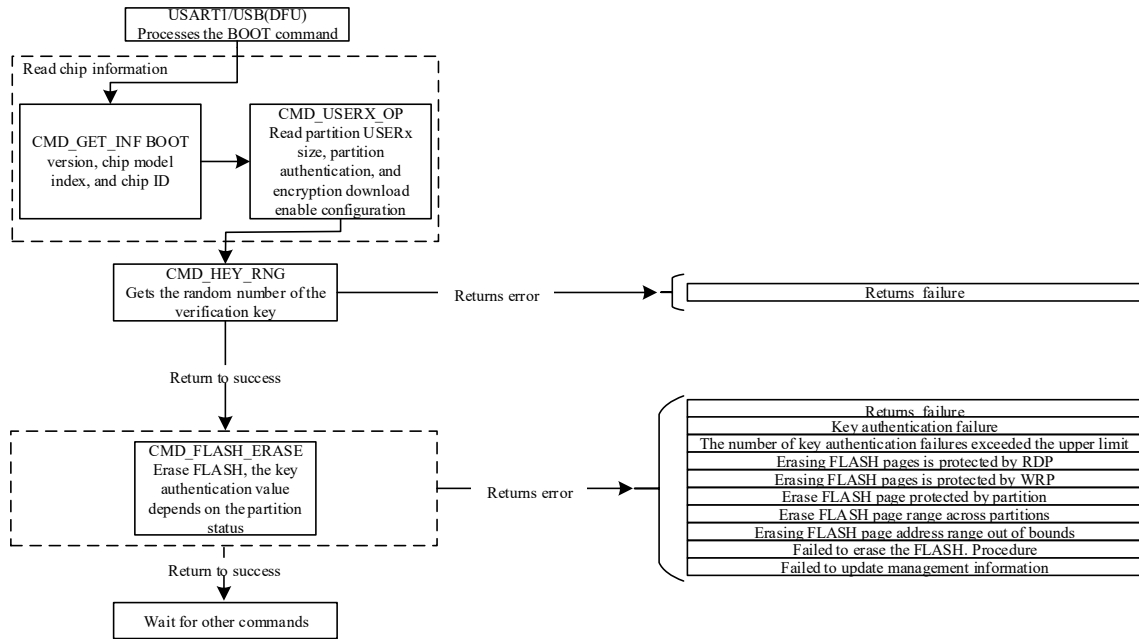
**Chip firmware integrity check:** select BOOT from the system storage area, and BOOT automatically verifies the integrity. If the verification fails, an infinite loop will be entered, and subsequent functions cannot be used.

**Command set interaction:** The PC TOOL transmits different commands based on the command set supported by the BOOT to use corresponding functions.

- read BOOT version number, chip model index, chip ID;
- get 16byte true random number;
- update the security key (for partition authentication and encrypted download);
- erase Flash;
- download user programs to Flash;
- CRC verification of downloaded user programs;
- read/configure option bytes (including read protection level, Flash page write protection, Data0/1 configuration, USER configuration);
- get partition USERX size, configure partition USERX size;
- system reset, you can reset the BOOT program to run again;
- jump to USER1 reset program entry address, jump to the reset program entry address of code which is downloaded to USER1 partition.

#### 3.1.1 Erase Command Control Flowchart

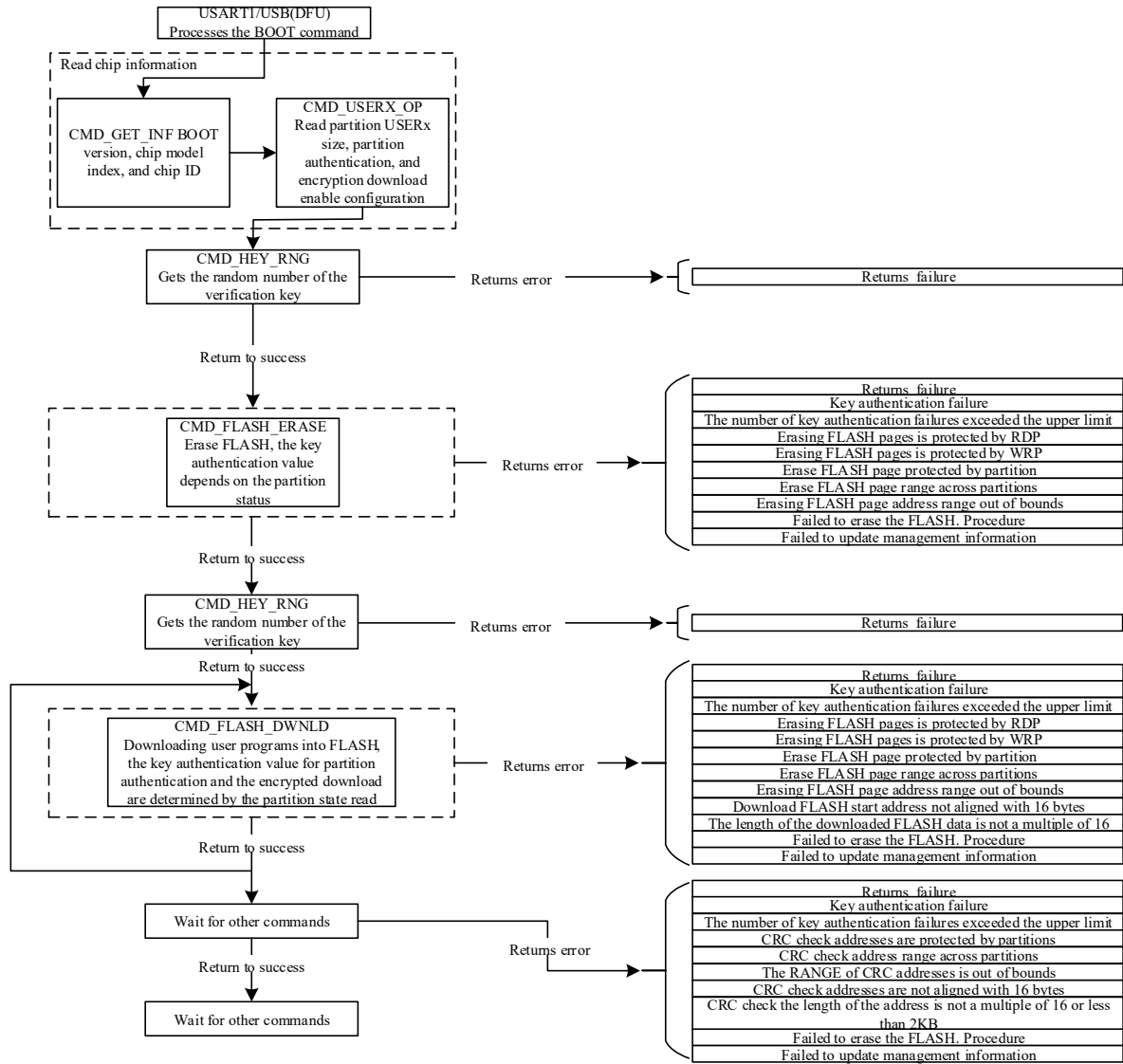
Figure 3-1 Flowchart of Erasing Command Control



### 3.1.2 Download Command Control Flowchart

Upper computer obtains a random number before downloading partition authentication encryption, and the host computer uses this random number to generate the key authentication value of 16-byte USER1/2/3 partition authentication. In the case of continuous download, the random number used in the subsequent download command is generated by the random number deriving algorithm of the first time instead of obtaining a new random number.

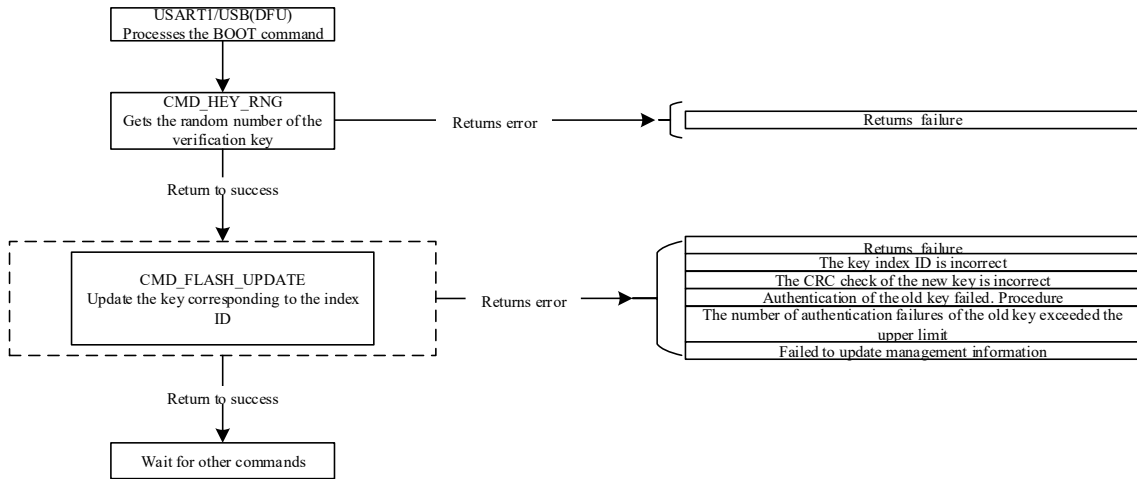
Figure 3-2 Flowchart for Downloading Command Control



### 3.1.3 Update Key Command Control Flowchart

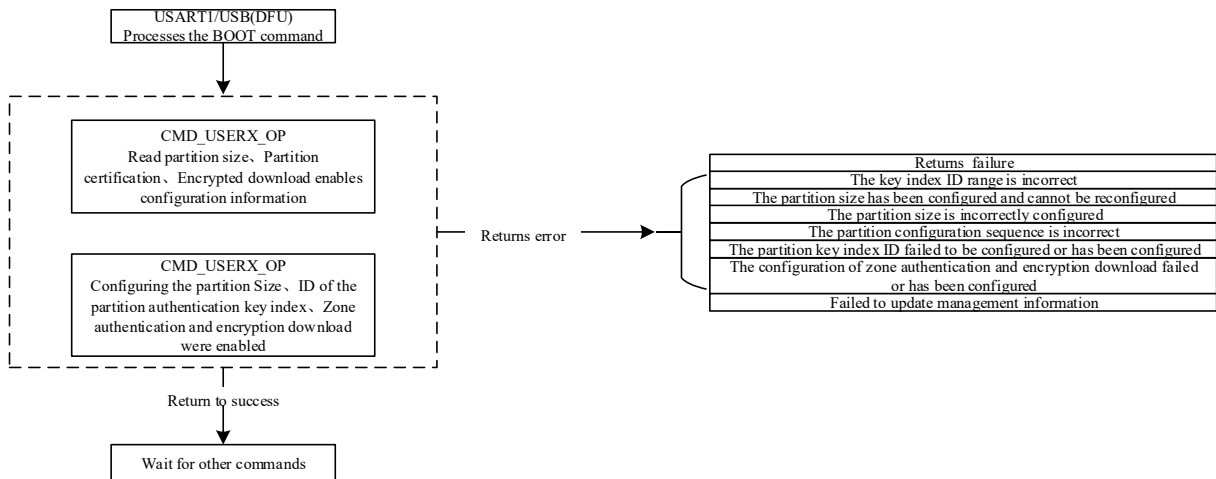
Figure 3-3 Command Control Flowchart for Updating a Key





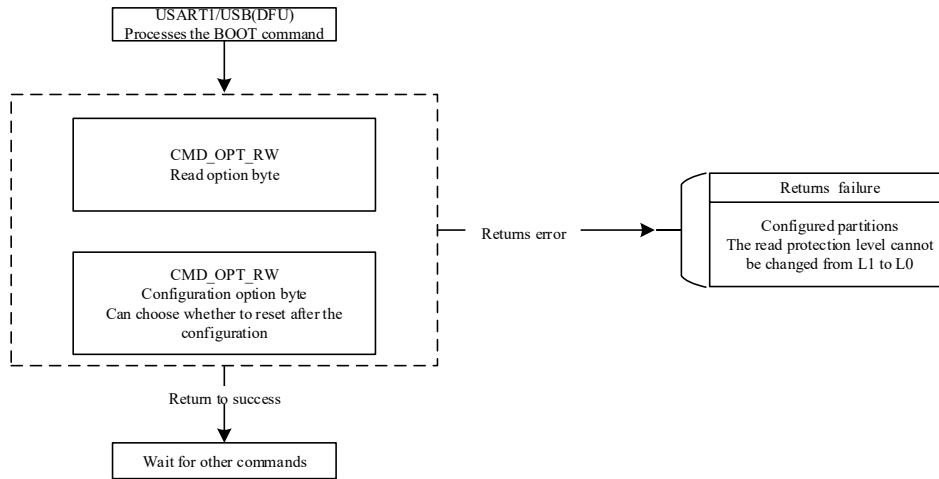
### 3.1.4 Partition Operation Command Flowchart

Figure 3-4 Flowchart of Commands for Partition Operations



### 3.1.5 Option Byte Read/Write Command Control Flowchart

Figure 3-5 Flowchart of Option Byte Read/Write Command Control



## 4 Version History

Version	Date	Changes
V1.0	2020.04.09	Initial version
V1.1	2020.08.04	<ol style="list-style-type: none"> <li>1. Add USB interface crystal mode control word;</li> <li>2. Added the timeout function of the UART interface.</li> <li>3. Add NVR MSI write interface;</li> </ol>
V1.2	2020.12.21	<ol style="list-style-type: none"> <li>1. Modify the NVR data programming did not clear the error mark problem;</li> <li>2. Fixed the BUG that NVR cannot be read after NVR sealing;</li> <li>3. Added a timeout mechanism for HIS detection</li> <li>4. Optimize code space</li> </ol>
V1.3	2022.07.06	<ol style="list-style-type: none"> <li>1. Deleted chapter 2.2.11 CMD_APP_GO;</li> <li>2. Fixed some typos.</li> </ol>

## 5 Disclaimer

This document is the exclusive property of NSING TECHNOLOGIES PTE. LTD.(Hereinafter referred to as NSING). This document, and the product of NSING described herein (Hereinafter referred to as the Product) are owned by NSING under the laws and treaties of Republic of Singapore and other applicable jurisdictions worldwide. The intellectual properties of the product belong to Nations Technologies Inc. and Nations Technologies Inc. does not grant any third party any license under its patents, copyrights, trademarks, or other intellectual property rights. Names and brands of third party may be mentioned or referred thereto (if any) for identification purposes only. NSING reserves the right to make changes, corrections, enhancements, modifications, and improvements to this document at any time without notice. Please contact NSING and obtain the latest version of this document before placing orders. Although NATIONS has attempted to provide accurate and reliable information, NATIONS assumes no responsibility for the accuracy and reliability of this document. It is the responsibility of the user of this document to properly design, program, and test the functionality and safety of any application made of this information and any resulting product. In no event shall NATIONS be liable for any direct, indirect, incidental, special, exemplary, or consequential damages arising in any way out of the use of this document or the Product. NATIONS Products are neither intended nor warranted for usage in systems or equipment, any malfunction or failure of which may cause loss of human life, bodily injury or severe property damage. Such applications are deemed, Insecure Usage'. Insecure usage includes, but is not limited to: equipment for surgical implementation, atomic energy control instruments, airplane or spaceship instruments, all types of safety devices, and other applications intended to supporter sustain life. All Insecure Usage shall be made at user's risk. User shall indemnify NATIONS and hold NATIONS harmless from and against all claims, costs, damages, and other liabilities, arising from or related to any customer's Insecure Usage Any express or implied warranty with regard to this document or the Product, including, but not limited to. The warranties of merchantability, fitness for a particular purpose and non-infringement are disclaimed to the fullest extent permitted by law. Unless otherwise explicitly permitted by NATIONS, anyone may not use, duplicate, modify, transcribe or otherwise distribute this document for any purposes, in whole or in part.