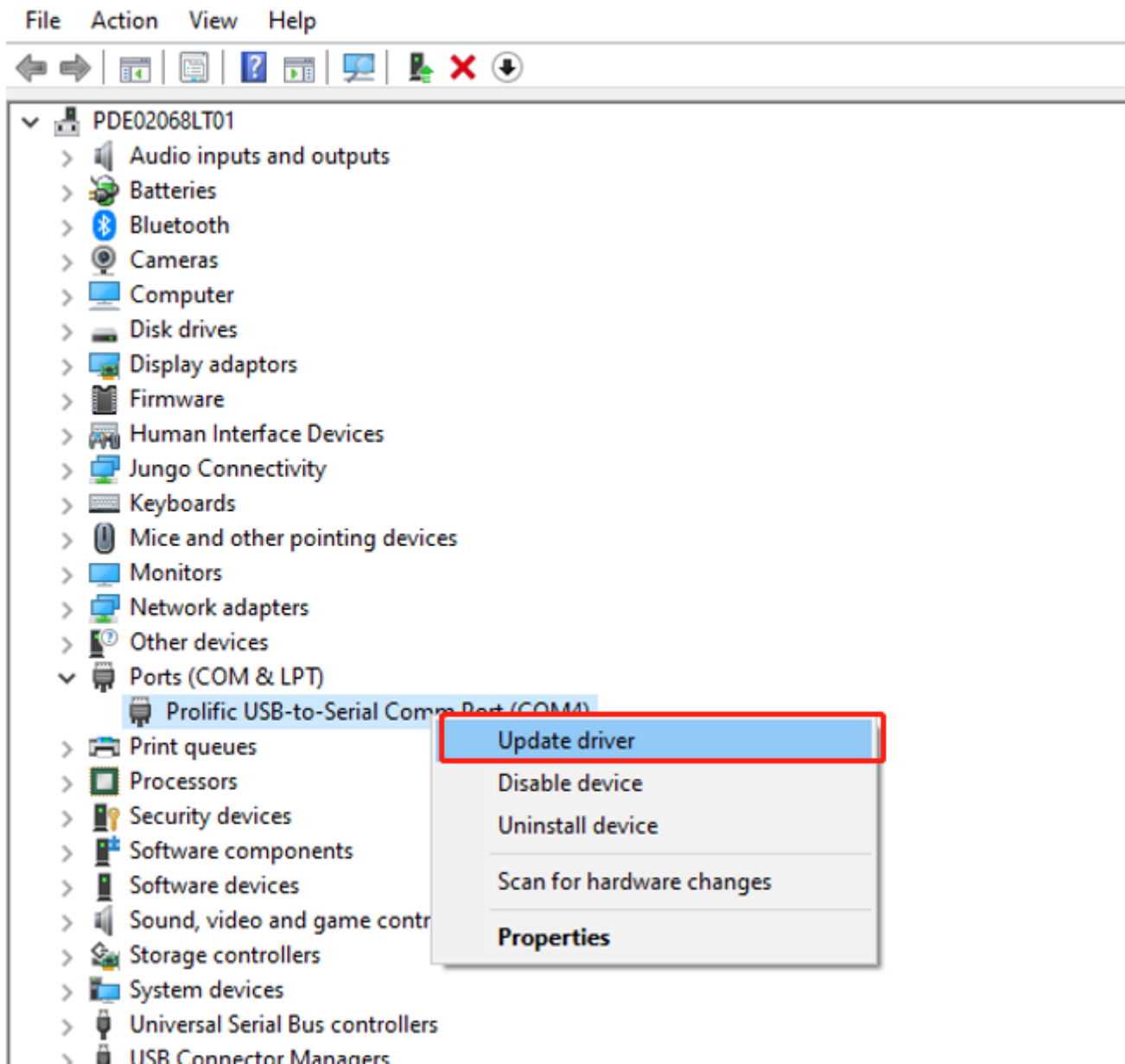


NSLink instructions

Computer-right-click-management-device manager, find the device you want to install the driver, right-click-update driver-browse the folder where the driver is located.

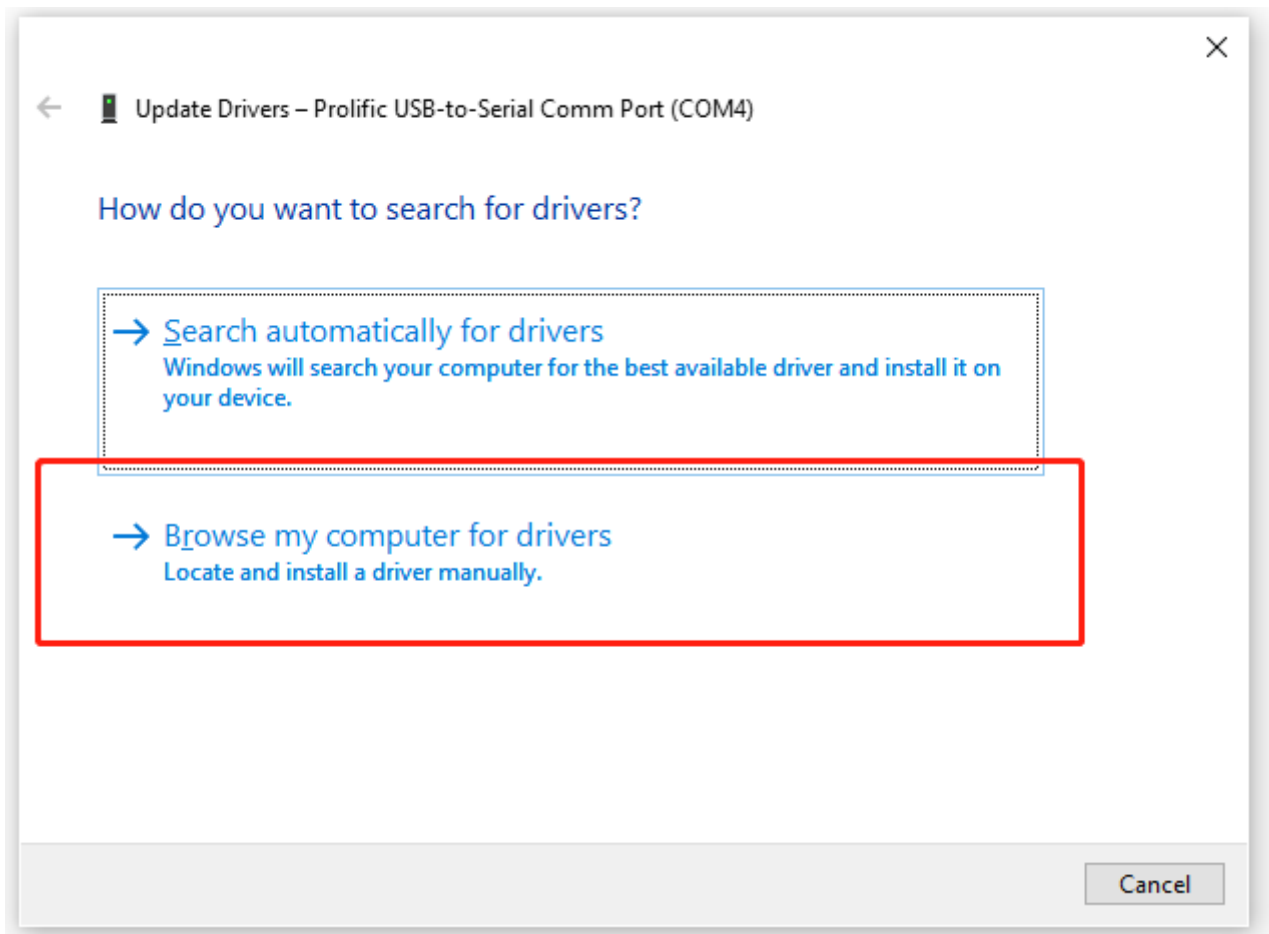


Nations Technologies Inc.

Tel: +86-755-86309900


Email: info@nationstech.com

Address: Nations Tower, #109 Baoshen Road, Hi-tech Park North,
Nanshan District, Shenzhen, 518057, P.R.China



Browse to select the path of the driver file

×

←  Update Drivers – Prolific USB-to-Serial Comm Port (COM4)

Browse for drivers on your computer


Search for drivers in this location:

☒ Include subfolders

→ Let me pick from a list of available drivers on my computer
 This list will show available drivers compatible with the device, and all drivers in the same category as the device.

Select the type of device to update the driver








←  Update Drivers – Prolific USB-to-Serial Comm Port (COM4)

Select the device driver you want to install for this hardware.



Select the manufacturer and model of your hardware device and then click Next. If you have a disk that contains the driver that you want to install, click Have Disk.

☐ Show compatible hardware

Manufacturer	Model
(Standard port types)	 Communications Port
Compaq GSM Radio Card	 ECP Printer Port
DBC	 Multiport Communications Port
Ericsson GC25	 Printer Port
< >	 Serial



This driver is digitally signed.

[Tell me why driver signing is important](#)

Have Disk...

Next

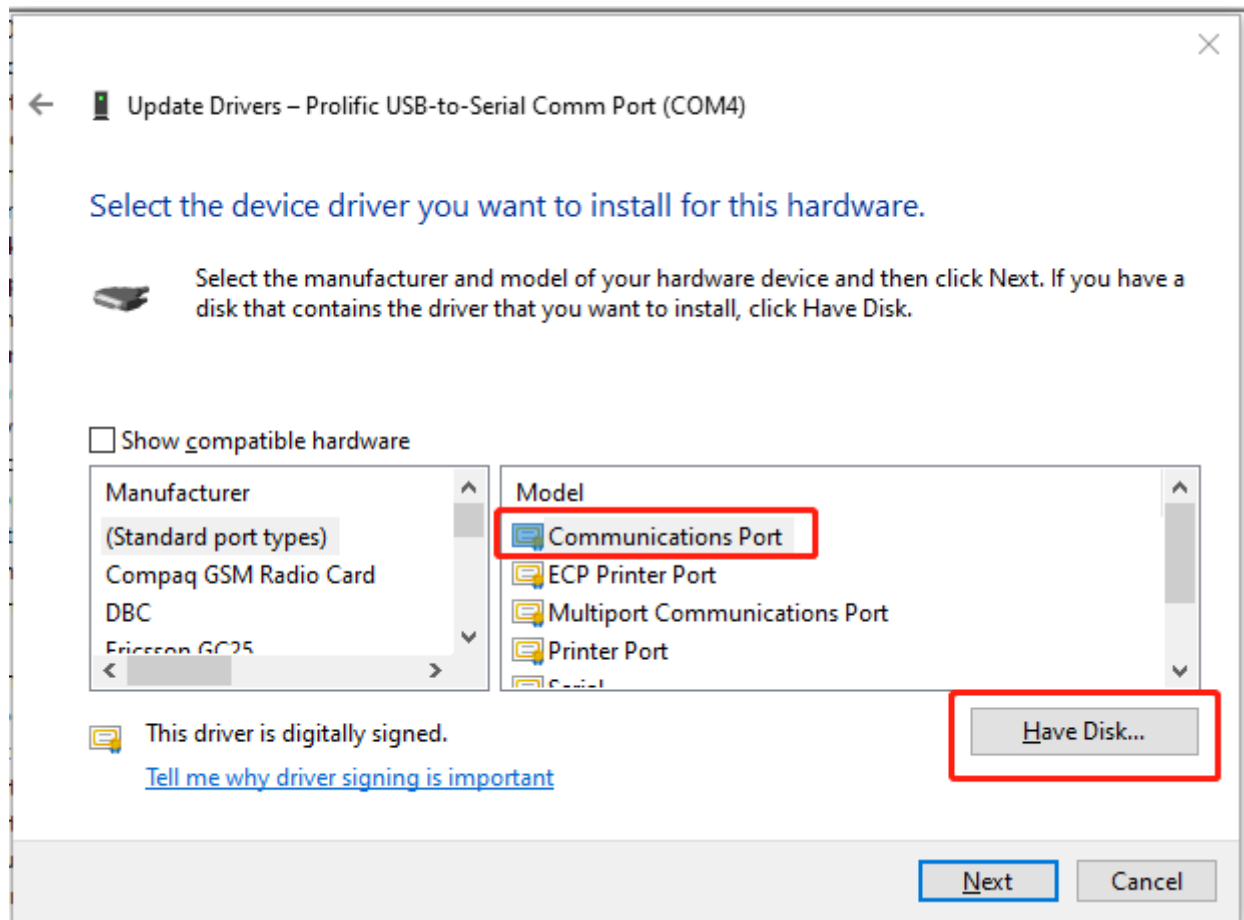
Cancel

Nations Technologies Inc.

Tel: +86-755-86309900

Email: info@nationstech.com

Address: Nations Tower, #109 Baoshen Road, Hi-tech Park North,
Nanshan District, Shenzhen, 518057, P.R.China




Browse to select the CMSIS-DAP.INF driver file

Nations Technologies Inc.

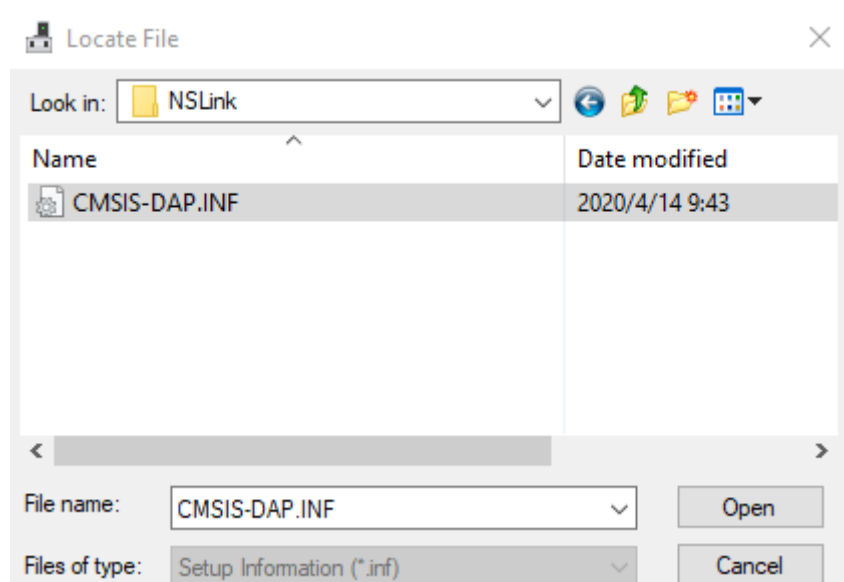
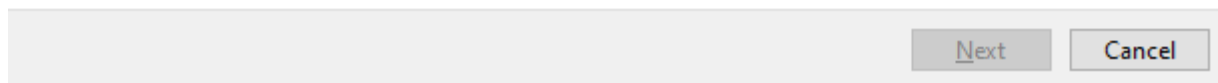
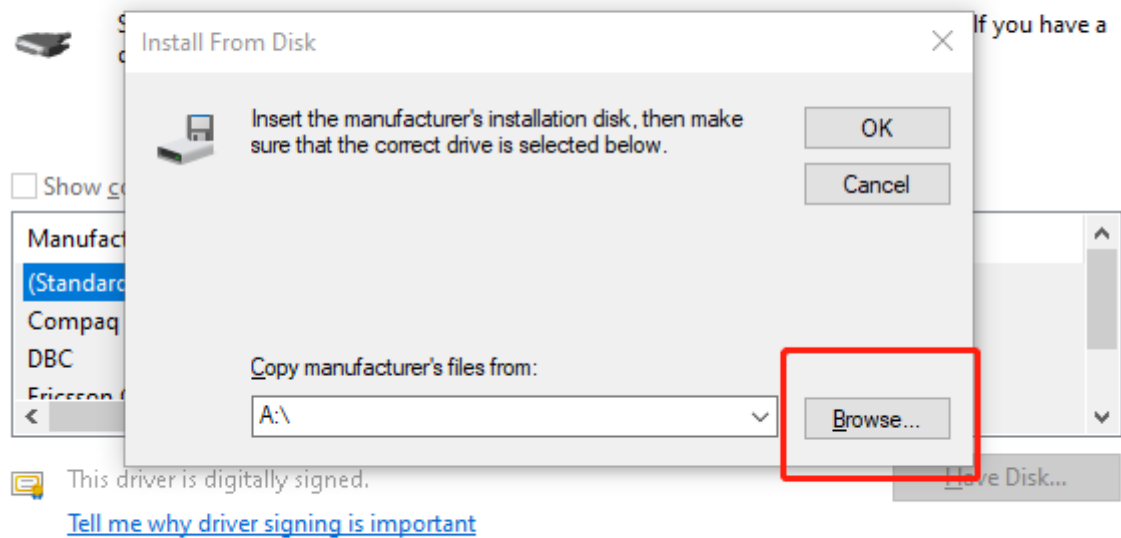
Tel: +86-755-86309900

Email: info@nationstech.com

Address: Nations Tower, #109 Baoshen Road, Hi-tech Park North,
Nanshan District, Shenzhen, 518057, P.R.China

←  Update Drivers – Prolific USB-to-Serial Comm Port (COM4)

Select the device driver you want to install for this hardware.

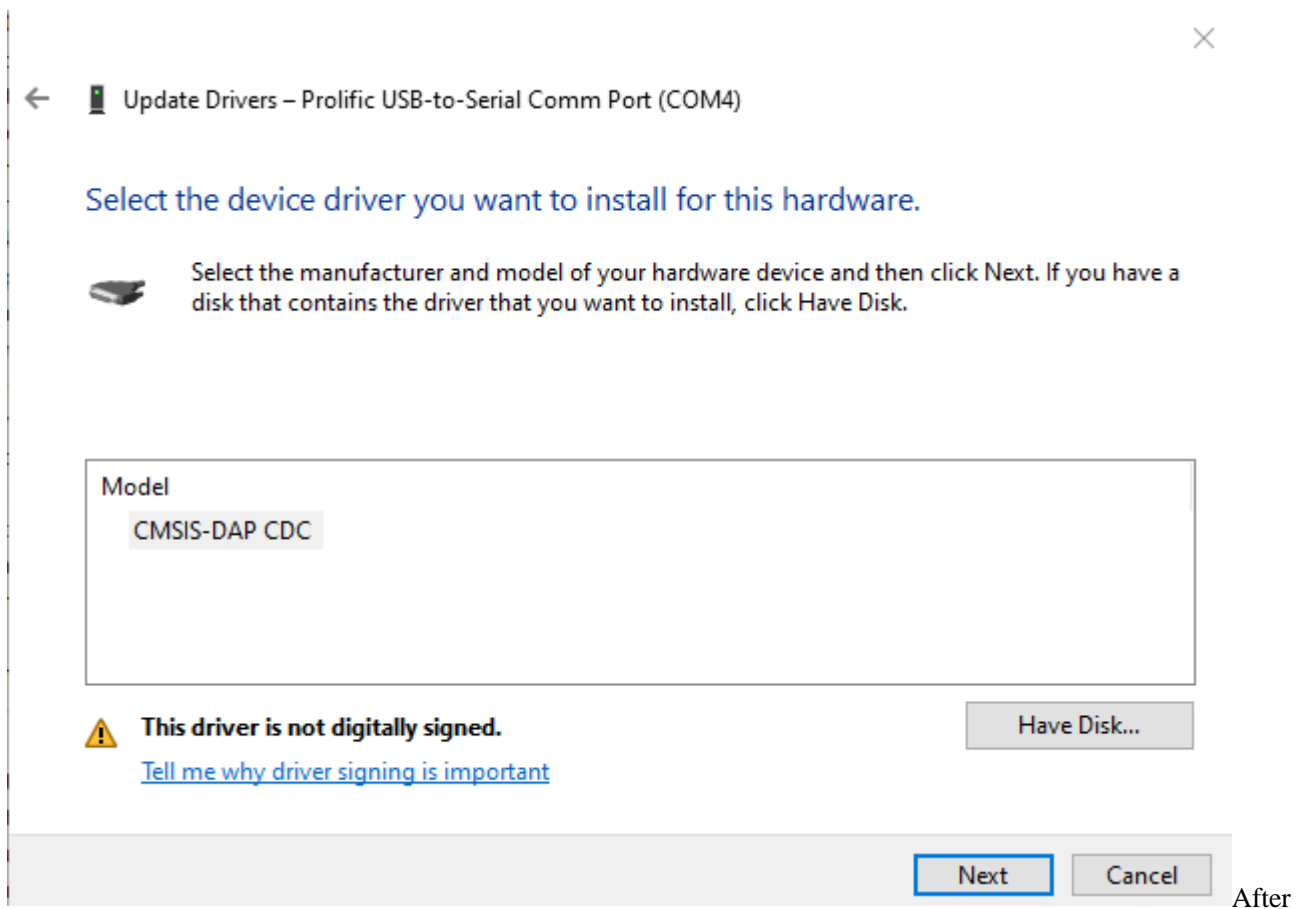


Nations Technologies Inc.

Tel: +86-755-86309900


Email: info@nationtech.com

Address: Nations Tower, #109 Baoshen Road, Hi-tech Park North,
Nanshan District, Shenzhen, 518057, P.R.China



the driver is installed, the prompt interface is as follows:



←  Update Drivers – Prolific USB-to-Serial Comm Port (COM4)

Windows encountered a problem installing the drivers for your device

Windows found drivers for your device but encountered an error while attempting to install them.



CMSIS-DAP CDC

The third-party INF does not contain digital signature information.

If you know the manufacturer of your device, you can visit their website and check the support section for drivers.

[Close](#)

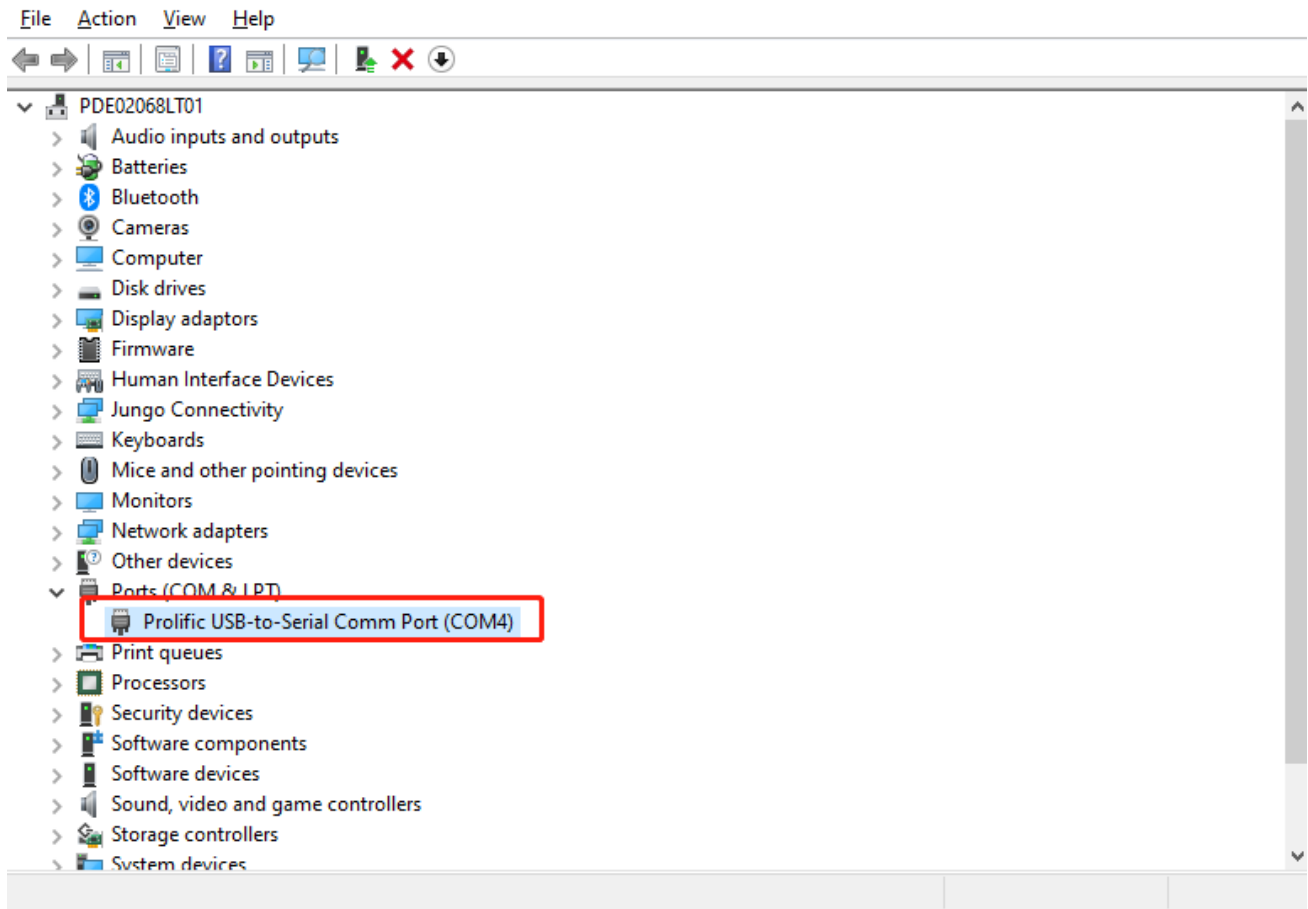
After the driver is installed successfully, you can find the CMSIS-DAP CDC serial port in the port column. At this point, you can use the CDC function of NSLink, the serial port parameters are 115200bps baud rate, data bit 8, stop bit 1, no parity bit.

Nations Technologies Inc.

Tel: +86-755-86309900

Email: info@nationstech.com

Address: Nations Tower, #109 Baoshen Road, Hi-tech Park North,
Nanshan District, Shenzhen, 518057, P.R.China



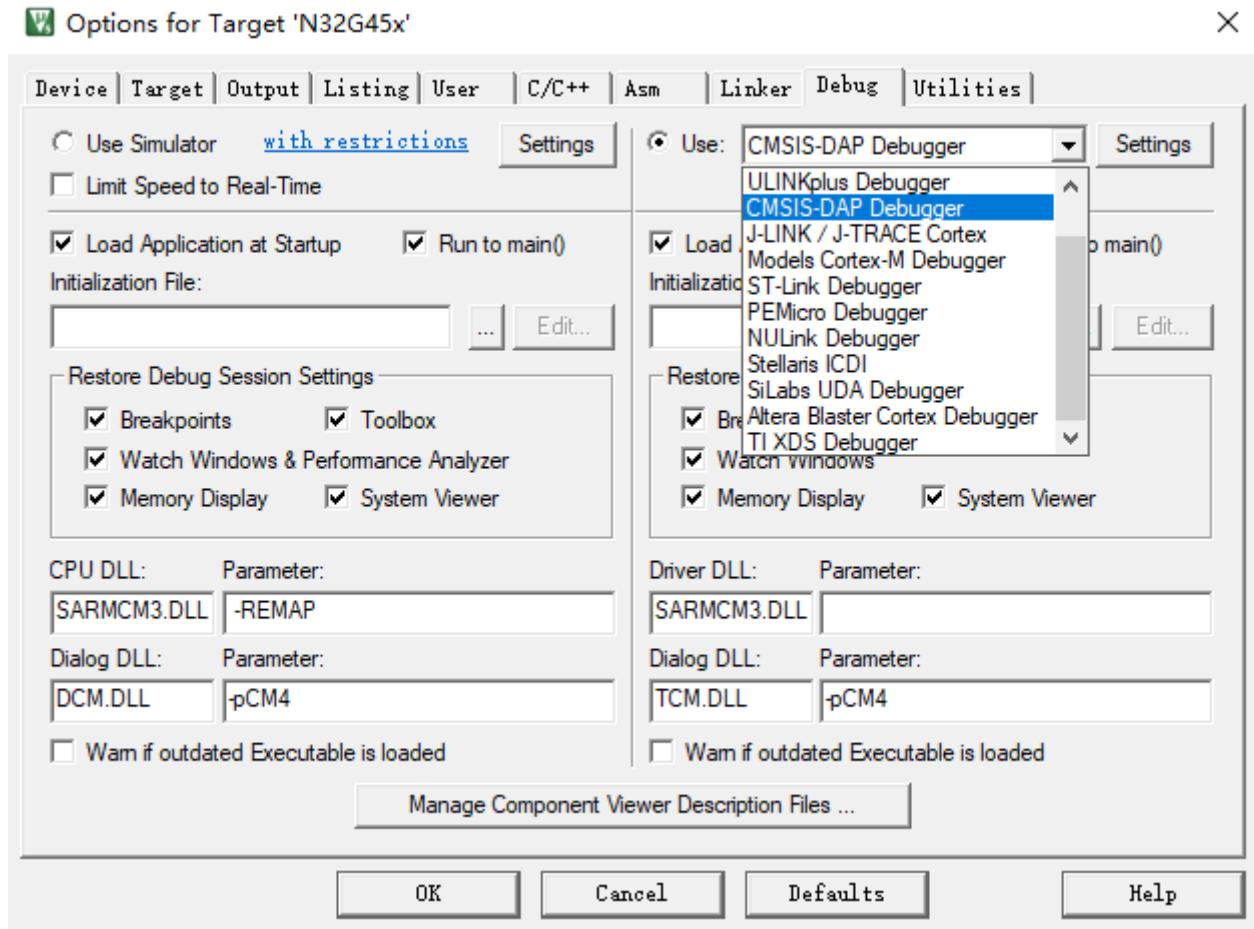
Open the Keil development environment, select the menu Project-Options-Debug

Nations Technologies Inc.

Tel: +86-755-86309900

Email: info@nationstech.com

Address: Nations Tower, #109 Baoshen Road, Hi-tech Park North,
Nanshan District, Shenzhen, 518057, P.R.China



Select CMSIS-DAP Debugger, click Settings, you can see the emulator CMSIS-DAP-NSLink, after successfully connecting to the target board, IDCODE information will be displayed on the right.

Nations Technologies Inc.

Tel: +86-755-86309900

Email: info@nationtech.com

Address: Nations Tower, #109 Baoshen Road, Hi-tech Park North,
Nanshan District, Shenzhen, 518057, P.R.China

Options for Target 'N32G45x'

CMSIS-DAP Cortex-M Target Driver Setup

Debug

Trace

Flash Download

CMSIS-DAP - JTAG/SW Adapter

CMSIS-DAP-NSLink

Serial No: 0001A0000002

Firmware Version: 2.0.0

☒ SWJ
 Port: SW
 Max Clock: 10MHz

SW Device

IDCODE	Device Name	Move
0x2BA01477	ARM CoreSight SW-DP	<div>Up</div> <div>Down</div>

☒ Automatic Detection
 ID CODE:

☐ Manual Configuration
 Device Name:

Add

Delete

Update

AP: 0x00

Debug

Connect & Reset Options

Connect: Normal

Reset: Autodetect

☒ Reset after Connect
 ☐ Log Debug Accesses

☐ Stop after Reset

Cache Options

☒ Cache Code
 ☒ Cache Memory

Download Options

☐ Verify Code Download
 ☐ Download to Flash

OK

Cancel

Help

OK

Cancel

Defaults

Help

Nations Technologies Inc.

Tel: +86-755-86309900

Email: info@nationstech.com

Address: Nations Tower, #109 Baoshen Road, Hi-tech Park North,
Nanshan District, Shenzhen, 518057, P.R.China